

PDE6B antibody

Cat. No. GTX25663

Host	Rabbit
Clonality	Polyclonal
Isotype	IgG
Applications	WB, ICC/IF, IHC-Fr, FCM, IHC
Reactivity	Human, Mouse, Bovine

Package
100 µg

Applications

Application Note

*Optimal dilutions/concentrations should be determined by the researcher.

Suggested dilution	Recommended dilution
WB	2 µg/ml
ICC/IF	1:250
IHC-Fr	Assay dependent
FCM	3-5 µg/10 ⁶ cells
IHC	Assay dependent

Not tested in other applications.

Calculated MW 99 kDa. ([Note](#))

Properties

Form	Liquid
Buffer	PBS, 0.1% BSA
Preservative	0.05% Sodium azide
Storage	Store as concentrated solution. Centrifuge briefly prior to opening vial. For short-term storage (1-2 weeks), store at 4°C. For long-term storage, aliquot and store at -20°C or below. Avoid multiple freeze-thaw cycles.
Concentration	1 mg/ml (Please refer to the vial label for the specific concentration.)
Immunogen	Synthetic Peptides: H(20) Q Y F G (K/R) K L S P E N V A G A C(36)
Purification	Purified by antigen-affinity chromatography
Conjugation	Unconjugated



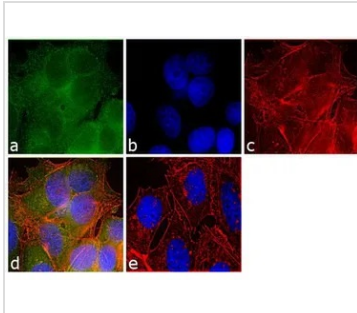
For full product information, images and publications, please visit our [website](#).

For laboratory research use only. Not for any clinical, therapeutic, or diagnostic use in humans or animals. Not for animal or human consumption.

Note

Purchasers shall not, and agree not to enable third parties to, analyze, copy, reverse engineer or otherwise attempt to determine the structure or sequence of the product.

DATA IMAGES



GTx25663 ICC/IF Image

ICC/IF analysis of MCF-7 cells using GTx25663 PDE6B antibody. Panel e is a no primary antibody control.

Green : Primary antibody

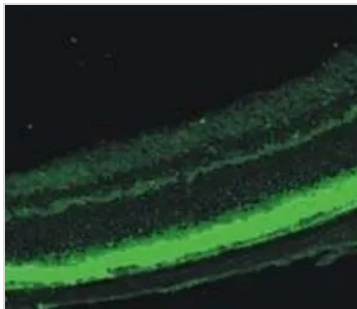
Blue : Nuclei

Red : Actin

Fixation : 4% paraformaldehyde

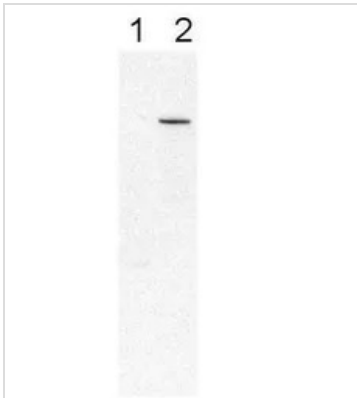
Permeabilization : 0.1% Triton X-100 for 10 minute

Dilution : 1:250 dilution in 0.1% BSA and incubated for 3 hours at room temperature



GTx25663 IHC-Fr Image

IHC-Fr analysis of mouse retina outer segments using GTx25663 PDE6B antibody.



GTx25663 WB Image

WB analysis of various samples using GTx25663.

Lane 1 : extracts of RD mice

Lane 2 : Balb/C extracts



For full product information, images and publications, please visit our [website](https://www.genetex.com).