

## FE65 antibody

Cat. No. GTX25668

Host	Rabbit
Clonality	Polyclonal
Isotype	IgG
Applications	WB, ICC/IF, FCM
Reactivity	Human, Mouse, Rat

Package  
100 µg

## Applications

## Application Note

\*Optimal dilutions/concentrations should be determined by the researcher.

Suggested dilution	Recommended dilution
WB	1-2 µg/ml
ICC/IF	2 µg/ml
FCM	3-5 µg/10 <sup>6</sup> cells

Not tested in other applications.

Calculated MW	77 kDa. ( <a href="#">Note</a> )
Product Note	This antibody does not detect endogenous levels of Fe65.

## Properties

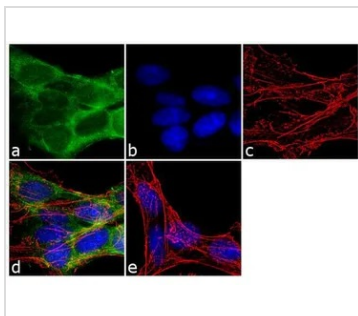
Form	Liquid
Buffer	PBS, 0.1% BSA
Preservative	0.05% Sodium azide
Storage	Store as concentrated solution. Centrifuge briefly prior to opening vial. For short-term storage (1-2 weeks), store at 4°C. For long-term storage, aliquot and store at -20°C or below. Avoid multiple freeze-thaw cycles.
Concentration	1 mg/ml (Please refer to the vial label for the specific concentration.)
Immunogen	Synthetic Peptide: P(352) Q E E E K L S Q R N A N P G I K C(369)
Purification	Purified by antigen-affinity chromatography
Conjugation	Unconjugated

For full product information, images and publications, please visit our [website](#).

For laboratory research use only. Not for any clinical, therapeutic, or diagnostic use in humans or animals. Not for animal or human consumption.

**Note**

Purchasers shall not, and agree not to enable third parties to, analyze, copy, reverse engineer or otherwise attempt to determine the structure or sequence of the product.

**DATA IMAGES**

**GTx25668 ICC/IF Image**

ICC/IF analysis of SH-SY5Y cells using GTx25668 FE65 antibody. Panel e is a no primary antibody control.

Green : Primary antibody

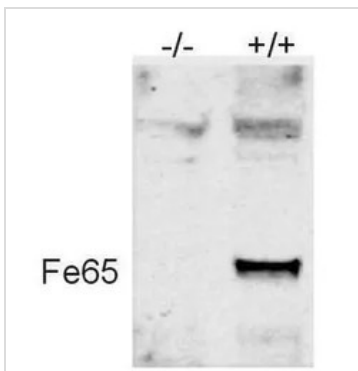
Blue : Nuclei

Red : Actin

Fixation : 4% paraformaldehyde

Permeabilization : 0.1% Triton X-100 for 10 minute

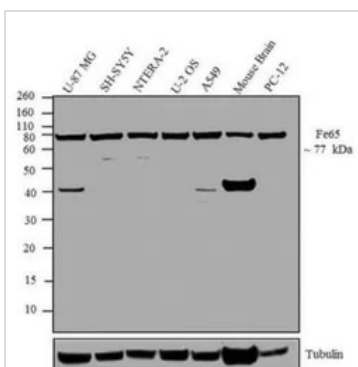
Dilution : 2 µg/ml in 0.1% BSA and incubated for 3 hours at room temperature


**GTx25668 WB Image**

WB analysis of pull-down material from mouse brain lysate using GTx25668 FE65 antibody.

Lane 1 : an immunopurified sample from a full-length Fe65 Knockout mouse

Lane 2 : an immunopurified sample from an Fe65 wild type mouse


**GTx25668 WB Image**

WB analysis of membrane enriched extracts (30 µg lysate) of U-87 MG (Lane 1), SH-SY5Y (Lane 2), NTERA-2 (Lane 3), U-2 OS (Lane 4), A549 (Lane 5), Mouse Brain (Lane 6) and PC-12 (Lane 7) using GTx25668 FE65 antibody.

Dilution : 1-2 µg/ml



For full product information, images and publications, please visit our [website](https://www.genetex.com).