

IGF1R beta (phospho Tyr1131 / Tyr1135 / Tyr1136) / Insulin Receptor beta (phospho Tyr1146 / Tyr1150 / Tyr1151) antibody

Cat. No. GTX25681

Host	Rabbit
Clonality	Polyclonal
Isotype	IgG
Applications	WB, IHC-Fr
Reactivity	Human, Mouse, Rat, Chicken

References (6)

Package

50 µl

Applications

Application Note

*Optimal dilutions/concentrations should be determined by the researcher.

Suggested dilution	Recommended dilution
WB	Assay dependent
IHC-Fr	Assay dependent

Not tested in other applications.

Calculated MW 156 kDa. ([Note](#))

Product Note

This antibody is raised against a synthetic peptide around phosphorylated Tyr1146 / Tyr1150 / Tyr1151 of Insulin Receptor (signal peptide cleaved form of P06213-2), which is identical to the sequence around phosphorylated Tyr1131 / Tyr1135 / Tyr1136 of IGF1R (signal peptide cleaved form).

Properties

Form	Liquid
Buffer	PBS, 0.1% BSA, 50% Glycerol
Preservative	0.05% Sodium azide
Storage	Store as concentrated solution. Centrifuge briefly prior to opening vial. For short-term storage (1-2 weeks), store at 4°C. For long-term storage, aliquot and store at -20°C or below. Avoid multiple freeze-thaw cycles.
Concentration	Batch dependent (Please refer to the vial label for the specific concentration.)
Immunogen	Synthetic phosphopeptide derived from the region of IR/IGF1R that contains tyrosines 1146, 1150 and 1151 of the human insulin receptor. The corresponding residues in the IGF1R are 1131, 1135 and 1136.
Purification	Purified by antigen-affinity chromatography
Conjugation	Unconjugated

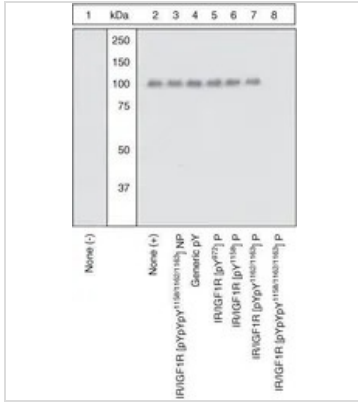


For full product information, images and publications, please visit our [website](#).

For laboratory research use only. Not for any clinical, therapeutic, or diagnostic use in humans or animals. Not for animal or human consumption.

Note
 Purchasers shall not, and agree not to enable third parties to, analyze, copy, reverse engineer or otherwise attempt to determine the structure or sequence of the product.

DATA IMAGES



GTX25681 WB Image

WB analysis of samples using GTX25681 IGF1R beta (phospho Tyr1131 / Tyr1135 / Tyr1136) / Insulin Receptor beta (phospho Tyr1146 / Tyr1150 / Tyr1151) antibody. The data show that only the immunogen phosphopeptide blocks the signal, demonstrating the specificity of the antibody.



For full product information, images and publications, please visit our [website](#).