

alpha Smooth Muscle Actin antibody

Cat. No. GTX25694

Host	Rabbit
Clonality	Polyclonal
Isotype	IgG
Applications	WB, ICC/IF, IHC-P, ELISA, IHC
Reactivity	Human, Mouse, Rat, Zebrafish, Bovine

References (1)

Package

50 µg

Applications

Application Note

ELISA: Use at a concentration of 0.1 - 1.0 µg/ml. IHC: Use at a dilution of 1/100 - 1/400. WB: Use at a concentration of 0.5 - 2.0 µg/ml. Predicted molecular weight: 42 kDa. The formalin-fixed tissues were boiled in 10 mM citrate buffer, pH 6.0 for 10 min, followed by cooling at RT for 20 min. Optimal dilutions/concentrations should be determined by the end user.

Calculated MW 42 kDa. ([Note](#))

Product Note

This antibody stains smooth muscle cells in vessel walls, gut wall, and myometrium. Myoepithelial cells in breast and salivary gland are also stained. It reacts with tumors arising from smooth muscles and myoepithelial cells. The other actins, such as beta- and gamma-cytoplasmic, striated muscle, and myocardium are not stained by this antibody.

Properties

Form	Liquid
Buffer	Preservative: 0.02% Sodium Azide; Constituents: PBS. pH 7.4
Storage	Store as concentrated solution. Centrifuge briefly prior to opening vial. Store at 4°C. DO NOT FREEZE.
Concentration	0.2 mg/ml (Please refer to the vial label for the specific concentration.)
Immunogen	Synthetic peptide (Human) corresponding to N-terminus of smooth muscle alpha actin.
Purification	Immunogen affinity purified
Conjugation	Unconjugated

Note

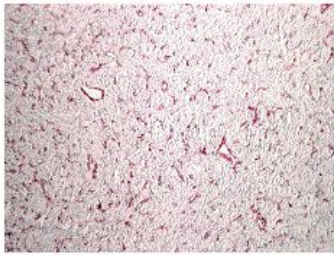
For laboratory research use only. Not for any clinical, therapeutic, or diagnostic use in humans or animals. Not for animal or human consumption.

Purchasers shall not, and agree not to enable third parties to, analyze, copy, reverse engineer or otherwise attempt to determine the structure or sequence of the product.



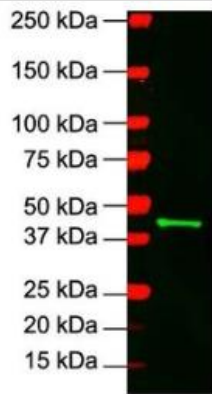
For full product information, images and publications, please visit our [website](#).

DATA IMAGES



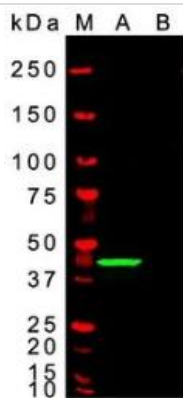
GTx25694 IHC Image

IHC analysis of human leiomyoma using alpha Smooth Muscle Actin antibody at a dilution of 1:100. Antigen retrieval was performed by boiling in 10 mM citrate buffer, pH 6.0 for 10 min.



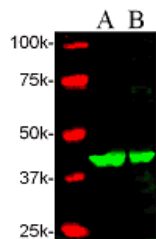
GTx25694 WB Image

WB analysis of 3T3 lysate using alpha Smooth Muscle Actin antibody at a concentration of 1.0 µg/ml.



GTx25694 WB Image

WB analysis of 3T3 lysate using alpha Smooth Muscle Actin antibody at a concentration of 1 µg/ml in the absence (A) and presence (B) of blocking peptide.



GTx25694 WB Image

Western blot of 3T3 (A) and mouse heart whole tissue lysate (B) labeled with anti-Actin antibody alpha smooth muscle (GTx25694).



For full product information, images and publications, please visit our [website](https://www.genetex.com).