

MMP10 antibody

Cat. No. GTX25708

Host	Rabbit
Clonality	Polyclonal
Isotype	IgG
Applications	WB, IP, ELISA
Reactivity	Human

Package

50 µg

Applications

Application Note

ELISA: Use at a concentration of 0.1 - 1.0 µg/ml. IP: Use 3-5µg for 10⁶ cells. WB: Use at a concentration of 0.5 - 2.0 µg/ml. Predicted molecular weight: 54 kDa. Optimal dilutions/concentrations should be determined by the end user.

Calculated MW 54 kDa. ([Note](#))**Product Note** This antibody specifically recognises MMP10, and does not cross-react with MMP1, 2, 3, 7, 8, 9 or 16.

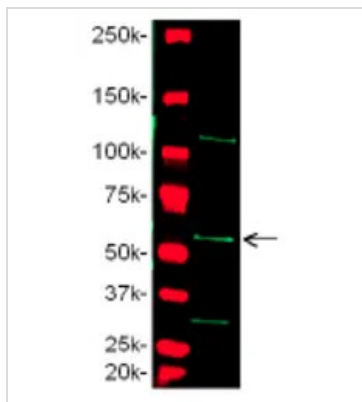
Properties

Form	Liquid
Buffer	PBS
Preservative	0.02% ProClin
Storage	Store as concentrated solution. Centrifuge briefly prior to opening vial. For short-term storage (1-2 weeks), store at 4°C. For long-term storage, aliquot and store at -20°C or below. Avoid multiple freeze-thaw cycles.
Concentration	0.5 mg/ml (Please refer to the vial label for the specific concentration.)
Immunogen	Synthetic peptide (Human).
Purification	Immunogen affinity purified
Conjugation	Unconjugated
Note	<p>For laboratory research use only. Not for any clinical, therapeutic, or diagnostic use in humans or animals. Not for animal or human consumption.</p> <p>Purchasers shall not, and agree not to enable third parties to, analyze, copy, reverse engineer or otherwise attempt to determine the structure or sequence of the product.</p>



For full product information, images and publications, please visit our [website](#).

DATA IMAGES



GTx25708 WB Image

Western blot analysis of MMP-10 in human MMP-7 over-expressing HEK293 cell lysate probed with GTx25708.



For full product information, images and publications, please visit our [website](#).