

## PKC gamma (phospho Thr655) antibody

Cat. No. GTX25796

Host	Rabbit
Clonality	Polyclonal
Isotype	IgG
Applications	WB, IHC-P, FCM
Reactivity	Human, Mouse

Package

50 µl

## Applications

## Application Note

\*Optimal dilutions/concentrations should be determined by the researcher.

Suggested dilution	Recommended dilution
WB	1:250
IHC-P	1:10-1:50
FCM	1:20

Not tested in other applications.

Calculated MW 78 kDa. ( [Note](#) )

## Properties

Form	Liquid
Buffer	PBS, 0.1% BSA
Preservative	0.05% Sodium azide
Storage	Store as concentrated solution. Centrifuge briefly prior to opening vial. For short-term storage (1-2 weeks), store at 4°C. For long-term storage, aliquot and store at -20°C or below. Avoid multiple freeze-thaw cycles.
Concentration	Batch dependent (Please refer to the vial label for the specific concentration.)
Immunogen	The antiserum was produced against a chemically synthesized phosphopeptide derived from a region of human PKC-gamma that contains threonine 655
Purification	Purified IgG
Conjugation	Unconjugated

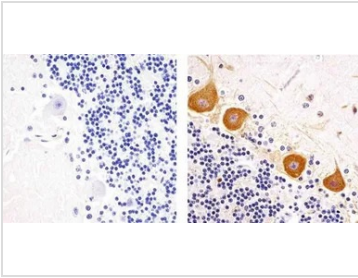
## Note

For laboratory research use only. Not for any clinical, therapeutic, or diagnostic use in humans or animals. Not for animal or human consumption.

Purchasers shall not, and agree not to enable third parties to, analyze, copy, reverse engineer or otherwise attempt to determine the structure or sequence of the product.



For full product information, images and publications, please visit our [website](#).

**DATA IMAGES**

**GTX25796 IHC-P Image**

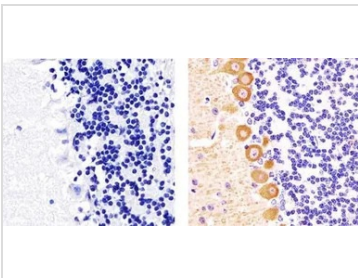
IHC-P analysis of human cerebellum tissue using GTX25796 PKC gamma (phospho Thr655) antibody.

Right : Primary antibody

Left : Negative control without primary antibody

Antigen retrieval : 10mM sodium citrate (pH 6.0), microwaved for 8-15 min

Dilution : 1:20


**GTX25796 IHC-P Image**

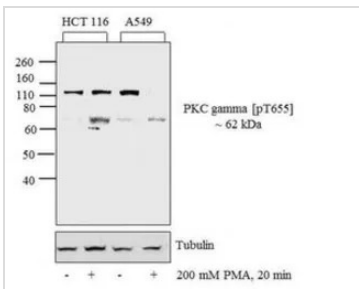
IHC-P analysis of human cerebellum tissue using GTX25796 PKC gamma (phospho Thr655) antibody.

Right : Primary antibody

Left : Negative control without primary antibody

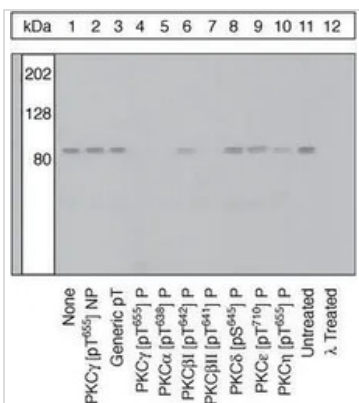
Antigen retrieval : 10mM sodium citrate (pH 6.0), microwaved for 8-15 min

Dilution : 1:20


**GTX25796 WB Image**

WB analysis of whole cell extracts (30 µg lysate) of HCT 116 (Lane 1), treated for 20 minutes with 200 mM of PMA (Lane 2), and A549 (Lane 3) treated for 20 minutes with 200 mM of PMA (Lane 4) using GTX25796 PKC gamma (phospho Thr655) antibody.

Dilution : 1:500


**GTX25796 WB Image**

WB analysis of samples using GTX25796 PKC gamma (phospho Thr655) antibody. The data show that only the immunogen phosphopeptide blocks the signal, demonstrating the specificity of the antibody. The membrane treated with phosphatase (Lane 12) eliminates the signal further verifying that the antibody is phospho-specific.

Dilution : 1:500



For full product information, images and publications, please visit our [website](http://www.genetex.com).