

## PKC gamma (phospho Thr674) antibody

Cat. No. GTX25797

Host	Rabbit
Clonality	Polyclonal
Isotype	IgG
Applications	WB, IHC-P
Reactivity	Human, Mouse, Rat

References ( 1 )

Package

50 µl

## Applications

## Application Note

\*Optimal dilutions/concentrations should be determined by the researcher.

Suggested dilution	Recommended dilution
WB	Assay dependent
IHC-P	1:10-1:50

Not tested in other applications.

Calculated MW 78 kDa. ( [Note](#) )

**Product Note** The peptide competition data (see Figure) suggest that this antibody will cross-react with PKC alpha [pS657] (69% homologous), beta 1 [pS661] (54%) and PKC eta [pS674] (38%).

## Properties

Form	Liquid
Buffer	PBS, 0.1% BSA, 50% Glycerol
Preservative	0.05% Sodium azide
Storage	Store as concentrated solution. Centrifuge briefly prior to opening vial. For short-term storage (1-2 weeks), store at 4°C. For long-term storage, aliquot and store at -20°C or below. Avoid multiple freeze-thaw cycles.
Concentration	Batch dependent (Please refer to the vial label for the specific concentration.)
Immunogen	The antiserum was produced against a chemically synthesized phosphopeptide derived from a region of human PKCγ that contains threonine 674. The sequence is conserved in mouse and rat.
Purification	Purified by antigen-affinity chromatography
Conjugation	Unconjugated

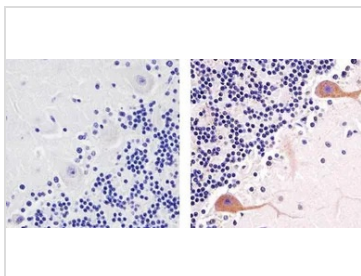


For full product information, images and publications, please visit our [website](#).

For laboratory research use only. Not for any clinical, therapeutic, or diagnostic use in humans or animals. Not for animal or human consumption.

**Note**

Purchasers shall not, and agree not to enable third parties to, analyze, copy, reverse engineer or otherwise attempt to determine the structure or sequence of the product.

**DATA IMAGES**

**GTX25797 IHC-P Image**

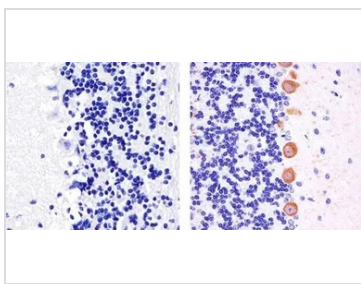
IHC-P analysis of human cerebellum tissue using GTX25797 PKC gamma (phospho Thr674) antibody.

Right : Primary antibody

Left : Negative control without primary antibody

Antigen retrieval : 10 mM sodium citrate (pH 6.0), microwaved for 8-15 min

Dilution : 1:20


**GTX25797 IHC-P Image**

IHC-P analysis of human cerebellum tissue using GTX25797 PKC gamma (phospho Thr674) antibody.

Right : Primary antibody

Left : Negative control without primary antibody

Antigen retrieval : 10 mM sodium citrate (pH 6.0), microwaved for 8-15 min

Dilution : 1:20



For full product information, images and publications, please visit our [website](#).