

58K Golgi protein antibody

Cat. No. GTX25820

Host	Rabbit
Clonality	Polyclonal
Isotype	IgG
Applications	WB, FCM
Reactivity	Human, Mouse

Package
100 µl

Applications

Application Note

WB: Use at a dilution of 1/500 - 1/1000. Detects a band of approximately 58 kDa (predicted molecular weight: 58 kDa). Optimal dilutions/concentrations should be determined by the end user. We are currently arranging to have this antibody tested in immunofluorescence.

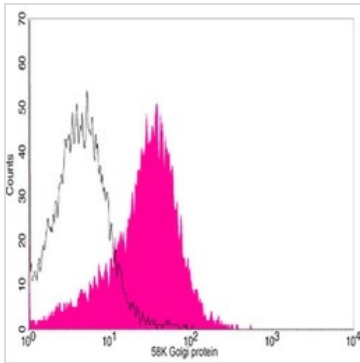
Calculated MW	59 kDa. (Note)
Product Note	This antibody recognises a 58kD band in human liver lysate. The band is not seen when using the immunising peptide for blocking.

Properties

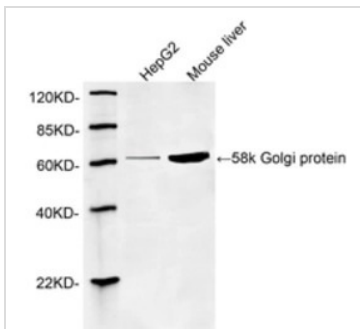
Form	Liquid
Buffer	PBS, 1% BSA
Preservative	0.02% Sodium azide
Storage	Store as concentrated solution. Centrifuge briefly prior to opening vial. For short-term storage (1-2 weeks), store at 4°C. For long-term storage, aliquot and store at -20°C or below. Avoid multiple freeze-thaw cycles.
Concentration	0.482 mg/ml (Please refer to the vial label for the specific concentration.)
Immunogen	Synthetic peptide: C-LREQGRGKDQPGRLLK conjugated to KLH, corresponding to amino acids 203-217 of Human Golgi marker 58K protein.
Purification	Immunogen affinity purified
Conjugation	Unconjugated
Note	<p>For laboratory research use only. Not for any clinical, therapeutic, or diagnostic use in humans or animals. Not for animal or human consumption.</p> <p>Purchasers shall not, and agree not to enable third parties to, analyze, copy, reverse engineer or otherwise attempt to determine the structure or sequence of the product.</p>



For full product information, images and publications, please visit our [website](#).

DATA IMAGES

GTX25820 FCM Image

Flow cytometric analysis of HepG2 cells using 58K Golgi protein Antibody, pAb, Rabbit (GTX25820; shaded histogram) or with an isotype control antibody (open histogram), followed by R-PE conjugated anti-rabbit IgG.


GTX25820 WB Image

Western blot analysis of cell and tissue lysates using 1 µg/ml Rabbit Anti-58K Golgi protein Polyclonal Antibody (GTX25820). The signal was developed with IRDye™ 800 Conjugated Goat Anti-Rabbit IgG.

Predicted Size: 58 KD

Observed Size: 58 KD



For full product information, images and publications, please visit our [website](https://www.genetex.com).