

# Goat Anti-Mouse IgG antibody, F(ab')<sub>2</sub> fragment, pre-adsorbed (HRP)

**Cat. No. GTX25870**

<b>Host</b>	Goat
<b>Clonality</b>	Polyclonal
<b>Isotype</b>	IgG F(ab') <sub>2</sub>
<b>Applications</b>	WB, IHC-P, ELISA
<b>Reactivity</b>	Mouse

**Package**  
250 µg

## Applications

### Application Note

\*Optimal dilutions/concentrations should be determined by the researcher.

Suggested dilution	Recommended dilution
WB	1:1000-1:10000
IHC-P	1:500-1:2500
ELISA	1:300000

Not tested in other applications.

### Product Note

Pre-adsorbed with Bovine, Horse, Human, Rabbit, Rat and Sheep serum proteins. May react with immunoglobulins from other species.

## Properties

<b>Form</b>	Liquid
<b>Buffer</b>	20mM Potassium Phosphate, 150mM NaCl, 1% BSA
<b>Preservative</b>	0.01% Gentamicin Sulfate
<b>Storage</b>	Store as concentrated solution. Centrifuge briefly prior to opening vial. For short-term storage (1-2 weeks), store at 4°C. For long-term storage, aliquot and store at -20°C or below. Avoid multiple freeze-thaw cycles.
<b>Concentration</b>	1 mg/ml (Please refer to the vial label for the specific concentration.)
<b>Immunogen</b>	Mouse IgG whole molecule
<b>Purification</b>	Purified by antigen-affinity chromatography using Mouse IgG coupled to agarose beads followed by solid phase adsorptions to remove any unwanted reactivities, pepsin digestion and chromatographic separation. From serum
<b>Conjugation</b>	Horseradish peroxidase(HRP)



For full product information, images and publications, please visit our [website](#).

For laboratory research use only. Not for any clinical, therapeutic, or diagnostic use in humans or animals. Not for animal or human consumption.

## Note

Purchasers shall not, and agree not to enable third parties to, analyze, copy, reverse engineer or otherwise attempt to determine the structure or sequence of the product.

## DATA IMAGES



### GTX25870 WB Image

WB analysis of various samples using GTX25870 Goat Anti-Mouse IgG antibody, F(ab')<sub>2</sub> fragment, pre-adsorbed (HRP).

Lane 1 and 2 : Rabbit serum

Lane 3 and 4 : Human serum

Lane 5 : Human IgG

Lane 6 : Rat IgG

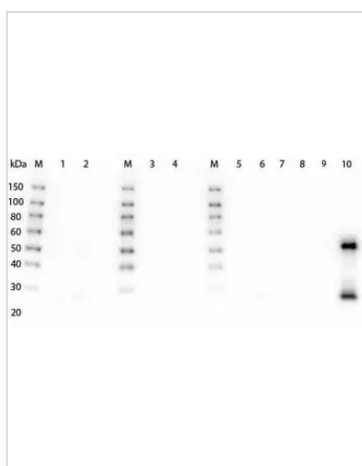
Lane 7 : Bovine IgG

Lane 8 : Horse IgG

Lane 9 : Rabbit IgG

Lane 10 : Mouse IgG

Dilution : 1:5000



### GTX25870 WB Image

WB analysis of various samples using GTX25870 Goat Anti-Mouse IgG antibody, F(ab')<sub>2</sub> fragment, pre-adsorbed (HRP).

Lane 1 and 2 : Rabbit serum

Lane 3 and 4 : Human serum

Lane 5 : Human IgG

Lane 6 : Rat IgG

Lane 7 : Bovine IgG

Lane 8 : Horse IgG

Lane 9 : Rabbit IgG

Lane 10 : Mouse IgG

Dilution : 1:5000



For full product information, images and publications, please visit our [website](https://www.genetex.com).