

Goat Anti-Mouse IgG (Fc fragment) antibody, F(ab')₂ fragment, pre-adsorbed**Cat. No. GTX25872**

Host	Goat
Clonality	Polyclonal
Isotype	IgG F(ab') ₂
Applications	WB, Dot, ELISA, IHC
Reactivity	Mouse

Package
500 µg

Applications

Application Note

*Optimal dilutions/concentrations should be determined by the researcher.

Suggested dilution	Recommended dilution
WB	1:2000-1:10000
Dot	Assay dependent
ELISA	1:10000
IHC	1:1000-1:5000

Not tested in other applications.

Product Note Pre-adsorbed with Bovine, Horse and Human serum proteins. May react with immunoglobulins from other species.

Properties

Form	Liquid
Buffer	20mM Potassium Phosphate, 150mM NaCl
Preservative	0.01% Sodium azide
Storage	Store as concentrated solution. Centrifuge briefly prior to opening vial. For short-term storage (1-2 weeks), store at 4°C. For long-term storage, aliquot and store at -20°C or below. Avoid multiple freeze-thaw cycles.
Concentration	1 mg/ml (Please refer to the vial label for the specific concentration.)
Immunogen	Mouse IgG Fc fragment
Purification	Purified by antigen-affinity chromatography using Mouse IgG coupled to agarose beads followed by solid phase adsorption to remove any unwanted reactivities, pepsin digestion and chromatographic separation. From serum
Conjugation	Unconjugated



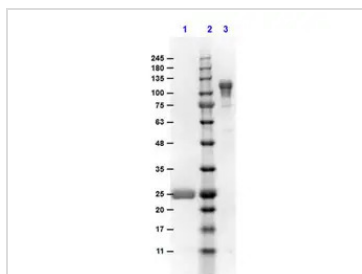
For full product information, images and publications, please visit our [website](#).

For laboratory research use only. Not for any clinical, therapeutic, or diagnostic use in humans or animals. Not for animal or human consumption.

Note

Purchasers shall not, and agree not to enable third parties to, analyze, copy, reverse engineer or otherwise attempt to determine the structure or sequence of the product.

DATA IMAGES

**GTX25872 Image**

SDS-PAGE analysis of GTX25872 Goat Anti-Mouse IgG (Fc fragment) antibody, F(ab')₂ fragment, pre-adsorbed.

Lane 1 : Reduced GTX25872

Lane 2 : Non-reduced GTX25872



For full product information, images and publications, please visit our [website](#).