

Goat Anti-Mouse IgG (Fc fragment) antibody, F(ab')₂ fragment, pre-adsorbed (FITC)**Cat. No. GTX25874**

Host	Goat
Clonality	Polyclonal
Isotype	IgG F(ab') ₂
Application	ICC/IF, FACS, Dot, ELISA
Reactivity	Mouse

Package

500 µg

APPLICATION

Application Note

*Optimal dilutions/concentrations should be determined by the researcher.

Suggested dilution	Recommended dilution
ICC/IF	1:1000-1:5000
FACS	1:500-1:2500
Dot	Assay dependent
ELISA	1:10000-1:50000

Not tested in other applications.

Product Note Pre-adsorbed with Bovine, Horse and Human serum proteins. May react with immunoglobulins from other species.

PROPERTIES

Form	Liquid
Buffer	20mM Potassium Phosphate, 150mM NaCl, 1% BSA
Preservative	0.01% Sodium azide
Storage	Store as concentrated solution. Centrifuge briefly prior to opening vial. For short-term storage (1-2 weeks), store at 4°C. For long-term storage, aliquot and store at -20°C or below. Avoid multiple freeze-thaw cycles. Protect from light.
Concentration	1 mg/ml (Please refer to the vial label for the specific concentration.)
Immunogen	Mouse IgG Fc fragment
Purification	Purified by antigen-affinity chromatography using Mouse IgG coupled to agarose beads followed by solid phase adsorptions to remove any unwanted reactivities, pepsin digestion and chromatographic separation. From serum
Conjugation	Fluorescein isothiocyanate (FITC) Ratio : 5.0 molecules FITC per Goat IgG F(ab') ₂ molecule.

For full product information, images and publications, please visit our [website](#).

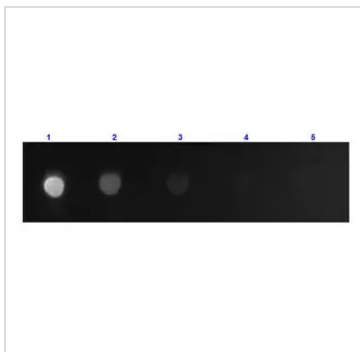
Date 2024 / 05 / 15 Page 1 of 2

For laboratory research use only. Not for any clinical, therapeutic, or diagnostic use in humans or animals. Not for animal or human consumption.

Note

Purchasers shall not, and agree not to enable third parties to, analyze, copy, reverse engineer or otherwise attempt to determine the structure or sequence of the product.

DATA IMAGES



GTx25874 Dot Image

Dot blot analysis of mouse Fc fragment using GTx25874 Goat Anti-Mouse IgG (Fc fragment) antibody, F(ab')₂ fragment, pre-adsorbed (FITC).

Lane 1 : 100 ng

Lane 2 : 33.3 ng

Lane 3 : 11.1 ng

Lane 4 : 3.7 ng

Lane 5 : 1.23 ng

Dilution : 1 µg/mL



For full product information, images and publications, please visit our [website](#).