

Cyclophilin 40 antibody

Cat. No. GTX25902

Host	Rabbit
Clonality	Polyclonal
Isotype	IgG
Applications	WB, ICC/IF, Gel supershift assays
Reactivity	Human, Mouse, Rat, Amphibians

Package
100 µl

Applications

Application Note

*Optimal dilutions/concentrations should be determined by the researcher.

Suggested dilution	Recommended dilution
WB	1:1,000
ICC/IF	1:250
Gel supershift assays	Assay dependent

Not tested in other applications.

Calculated MW 41 kDa. ([Note](#))

Properties

Form	Liquid
Buffer	Serum diluted with PBS
Preservative	0.05% Sodium azide
Storage	Store as concentrated solution. Centrifuge briefly prior to opening vial. For short-term storage (1-2 weeks), store at 4°C. For long-term storage, aliquot and store at -20°C or below. Avoid multiple freeze-thaw cycles.
Immunogen	Full length, recombinant human CyP-40 expressed in E. coli.
Purification	Unpurified
Conjugation	Unconjugated

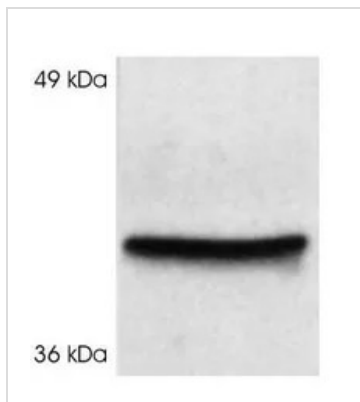
Note

For laboratory research use only. Not for any clinical, therapeutic, or diagnostic use in humans or animals. Not for animal or human consumption.

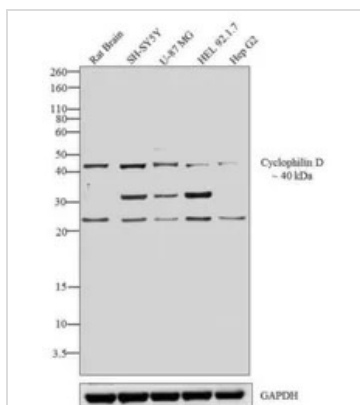
Purchasers shall not, and agree not to enable third parties to, analyze, copy, reverse engineer or otherwise attempt to determine the structure or sequence of the product.



For full product information, images and publications, please visit our [website](#).

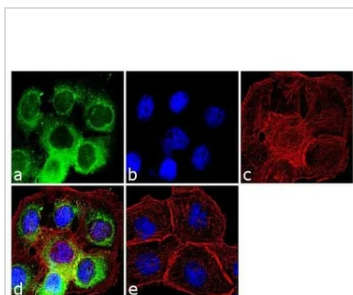
DATA IMAGES

GTX25902 WB Image

WB analysis of rat brain extract using GTX25902 Cyclophilin 40 antibody.


GTX25902 WB Image

WB analysis of whole cell extracts (30 ug lysate) of Rat Brain (Lane 1), SH-SY5Y (Lane 2), U-87 MG (Lane 3), HEL 92.1.7 (Lane 4), and Hep G2 (Lane 5) using GTX25902 Cyclophilin 40 antibody.

Dilution : 1:500-1:2000


GTX25902 ICC/IF Image

ICC/IF analysis of A431 cells using GTX25902 Cyclophilin 40 antibody. Panel e is a no primary antibody control.

Green : Primary antibody

Blue : Nuclei

Red : Actin

Fixation : 4% paraformaldehyde

Permeabilization : 0.1% Triton X-100 for 10 minute

Dilution : 1:250 dilution in 0.1% BSA and incubated for 3 hours at room temperature



For full product information, images and publications, please visit our [website](https://www.genetex.com).