

LMO7 antibody, Internal

Cat. No. GTX25955

Host	Goat
Clonality	Polyclonal
Isotype	IgG
Applications	WB
Reactivity	Human

Package
100 µg

Applications

Application Note

*Optimal dilutions/concentrations should be determined by the researcher.

Suggested dilution	Recommended dilution
WB	0.5-2µg/ml

Not tested in other applications.

Calculated MW 193 kDa. ([Note](#))

Product Note

Please note that the amino acid sequence of the immunizing peptide differs one amino acid from the current NCBI accession numbers (NP_005349.3, NP_056667.2). This antibody is expected to recognise both reported isoforms (NP_005349.3; NP_056667.2).

Properties

Form	Liquid
Buffer	TBS, 0.5% BSA
Preservative	0.02% Sodium azide
Storage	Store as concentrated solution. Centrifuge briefly prior to opening vial. For short-term storage (1-2 weeks), store at 4°C. For long-term storage, aliquot and store at -20°C or below. Avoid multiple freeze-thaw cycles.
Concentration	0.50 mg/ml (Please refer to the vial label for the specific concentration.)
Immunogen	Peptide with sequence ESTCVSASLPRS, from the internal region of the protein sequence according to AAD33924.1.
Purification	Purified by ammonium sulphate precipitation followed by antigen affinity chromatography
Conjugation	Unconjugated

Note

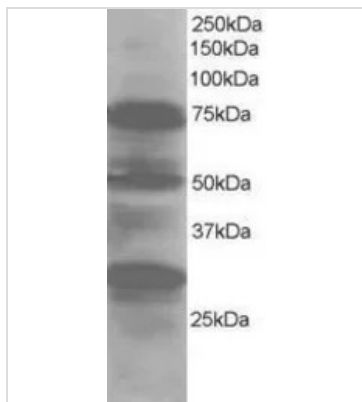
For laboratory research use only. Not for any clinical, therapeutic, or diagnostic use in humans or animals. Not for animal or human consumption.

Purchasers shall not, and agree not to enable third parties to, analyze, copy, reverse engineer or otherwise attempt to determine the structure or sequence of the product.



For full product information, images and publications, please visit our [website](#).

DATA IMAGES



GTX25955 WB Image

WB analysis of human lung lysate using GTX25955 LMO7 antibody, Internal.

Dilution : 1µg/ml

Loading : 30µg protein in RIPA buffer



For full product information, images and publications, please visit our [website](#).