

Renin Receptor antibody

Cat. No. GTX25959

Host	Goat
Clonality	Polyclonal
Isotype	IgG
Applications	WB, FCM, IHC
Reactivity	Human, Mouse, Rat

Package
50 µg

Applications

Application Note

*Optimal dilutions/concentrations should be determined by the researcher.

Suggested dilution	Recommended dilution
WB	1-2µg/ml
FCM	10µg/ml
IHC	1:10 - 1:500

Not tested in other applications.

Calculated MW 39 kDa. ([Note](#))

Properties

Form	Liquid
Buffer	TBS, 0.5% BSA
Preservative	0.02% Sodium azide
Storage	Store as concentrated solution. Centrifuge briefly prior to opening vial. For short-term storage (1-2 weeks), store at 4°C. For long-term storage, aliquot and store at -20°C or below. Avoid multiple freeze-thaw cycles.
Concentration	0.50 mg/ml (Please refer to the vial label for the specific concentration.)
Immunogen	Peptide with sequence C-SIIYRMTNQKIRMD, from the C Terminus of the protein sequence according to NP_005756.2.
Purification	Purified by ammonium sulphate precipitation followed by antigen affinity chromatography
Conjugation	Unconjugated

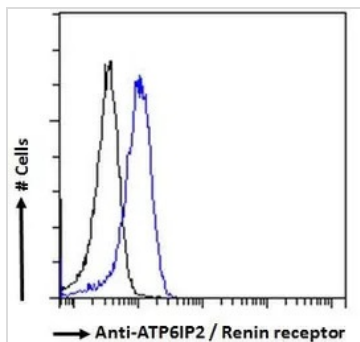
Note

For laboratory research use only. Not for any clinical, therapeutic, or diagnostic use in humans or animals. Not for animal or human consumption.

Purchasers shall not, and agree not to enable third parties to, analyze, copy, reverse engineer or otherwise attempt to determine the structure or sequence of the product.



For full product information, images and publications, please visit our [website](#).

DATA IMAGES

GTX25959 FCM Image

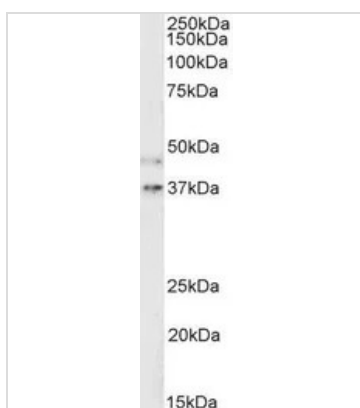
FACS analysis of PFA fixed HeLa cells using GTX25959 Renin Receptor antibody.

Blue : Primary antibody

Black : Isotype control

Permeabilization : 0.5% Triton

Dilution : 10 μ g/ml


GTX25959 WB Image

WB analysis of mouse kidney lysate using GTX25959 Renin Receptor antibody.

Dilution : 2 μ g/ml

Loading : 35 μ g protein in RIPA buffer



For full product information, images and publications, please visit our [website](https://www.genetex.com).