

## DcR1 antibody

Cat. No. GTX25975

|                     |                   |
|---------------------|-------------------|
| <b>Host</b>         | Rabbit            |
| <b>Clonality</b>    | Polyclonal        |
| <b>Isotype</b>      | IgG               |
| <b>Applications</b> | WB, ICC/IF, ELISA |
| <b>Reactivity</b>   | Human, Mouse, Rat |

Package  
100 µg

## Applications

## Application Note

\*Optimal dilutions/concentrations should be determined by the researcher.

| Suggested dilution | Recommended dilution |
|--------------------|----------------------|
| WB                 | 1µg/ml               |
| ICC/IF             | 10µg/ml              |
| ELISA              | Assay dependent      |

Not tested in other applications.

**Calculated MW** 27 kDa. ([Note](#))

## Properties

|                      |  |
|----------------------|--|
| <b>Form</b>          | Liquid   |
| <b>Buffer</b>        | PBS  |
| <b>Preservative</b>  | 0.02% Sodium azide   |
| <b>Storage</b>       | Store as concentrated solution. Centrifuge briefly prior to opening vial. For short-term storage (1-2 weeks), store at 4°C. For long-term storage, aliquot and store at -20°C or below. Avoid multiple freeze-thaw cycles. |
| <b>Concentration</b> | Batch dependent (Please refer to the vial label for the specific concentration.)   |
| <b>Immunogen</b>     | Peptide corresponding to aa 149- 167 at the extracellular domain (ED) of human DcR1 precursor (accession no. AF012536).  |
| <b>Purification</b>  | Purified by affinity chromatography  |
| <b>Conjugation</b>   | Unconjugated   |

## Note

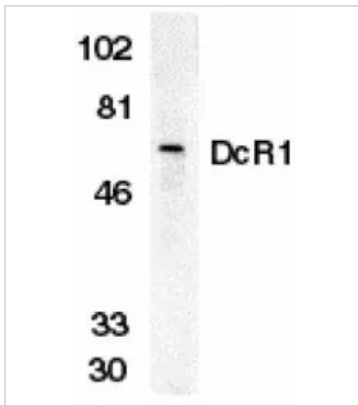
For laboratory research use only. Not for any clinical, therapeutic, or diagnostic use in humans or animals. Not for animal or human consumption.

Purchasers shall not, and agree not to enable third parties to, analyze, copy, reverse engineer or otherwise attempt to determine the structure or sequence of the product.

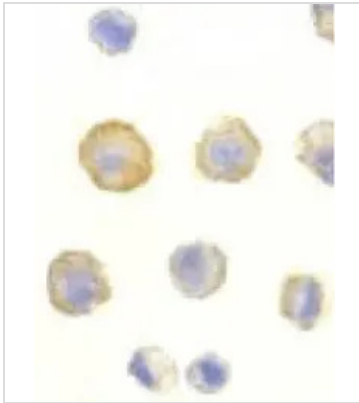


For full product information, images and publications, please visit our [website](#).

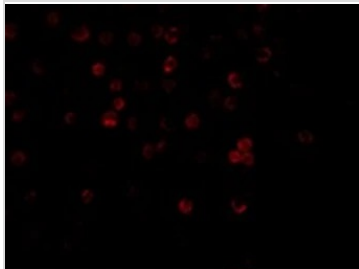
## DATA IMAGES

**GTX25975 WB Image**

Western blot analysis of DcR1 in HeLa whole cell lysate with DcR1 antibody (GTX25975) at 1 µg/ml.

**GTX25975 ICC/IF Image**

Immunocytochemical staining of DcR1 in HeLa cells with DcR1 antibody (GTX25975) at 10 µg/ml.

**GTX25975 ICC/IF Image**

ICC/IF analysis of HeLa cells using GTX25975 DcR1 antibody.

Dilution : 20 µg/ml



For full product information, images and publications, please visit our [website](#).