

DcR1 antibody

Cat. No. GTX25975

Host	Rabbit
Clonality	Polyclonal
Isotype	IgG
Applications	WB, ICC/IF, ELISA
Reactivity	Human, Mouse, Rat

Package
100 µg

Applications

Application Note

*Optimal dilutions/concentrations should be determined by the researcher.

Suggested dilution	Recommended dilution
WB	1µg/ml
ICC/IF	10µg/ml
ELISA	Assay dependent

Not tested in other applications.

Calculated MW 27 kDa. ([Note](#))

Properties

Form	Liquid
Buffer	PBS
Preservative	0.02% Sodium azide
Storage	Store as concentrated solution. Centrifuge briefly prior to opening vial. For short-term storage (1-2 weeks), store at 4°C. For long-term storage, aliquot and store at -20°C or below. Avoid multiple freeze-thaw cycles.
Concentration	Batch dependent (Please refer to the vial label for the specific concentration.)
Immunogen	Peptide corresponding to aa 149- 167 at the extracellular domain (ED) of human DcR1 precursor (accession no. AF012536).
Purification	Purified by affinity chromatography
Conjugation	Unconjugated

Note

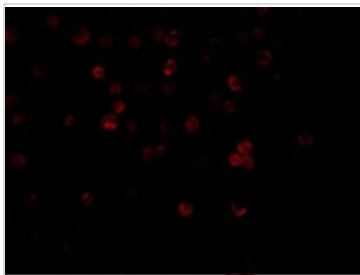
For laboratory research use only. Not for any clinical, therapeutic, or diagnostic use in humans or animals. Not for animal or human consumption.

Purchasers shall not, and agree not to enable third parties to, analyze, copy, reverse engineer or otherwise attempt to determine the structure or sequence of the product.



For full product information, images and publications, please visit our [website](#).

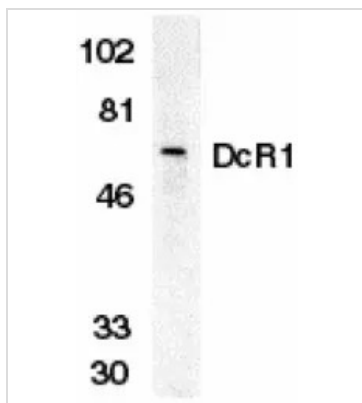
DATA IMAGES



GTx25975 ICC/IF Image

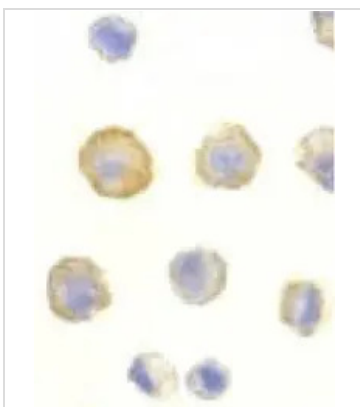
ICC/IF analysis of HeLa cells using GTx25975 DcR1 antibody.

Dilution : 20 µg/ml



GTx25975 WB Image

Western blot analysis of DcR1 in HeLa whole cell lysate with DcR1 antibody (GTx25975) at 1 µg/ml.



GTx25975 ICC/IF Image

Immunocytochemical staining of DcR1 in HeLa cells with DcR1 antibody (GTx25975) at 10 µg/ml.



For full product information, images and publications, please visit our [website](#).