

Goat Anti-Rabbit IgG (Fc fragment) antibody, F(ab')₂ fragment (Biotin)

Cat. No. GTX26021

Host	Goat
Clonality	Polyclonal
Isotype	IgG F(ab') ₂
Application	WB, ELISA, IHC
Reactivity	Rabbit

Package
250 µg

APPLICATION

Application Note

*Optimal dilutions/concentrations should be determined by the researcher.

Suggested dilution	Recommended dilution
WB	1:2000-1:10000
ELISA	1:20000-1:100000
IHC	1:1000-1:5000

Not tested in other applications.

PROPERTIES

Form	Liquid
Buffer	20mM Potassium Phosphate, 150mM NaCl, 1% BSA
Preservative	0.01% Sodium azide
Storage	Store as concentrated solution. Centrifuge briefly prior to opening vial. For short-term storage (1-2 weeks), store at 4°C. For long-term storage, aliquot and store at -20°C or below. Avoid multiple freeze-thaw cycles.
Concentration	1 mg/ml (Please refer to the vial label for the specific concentration.)
Immunogen	Rabbit IgG Fc fragment
Purification	IgG fraction This product was prepared from monospecific antiserum by immunoaffinity chromatography using Rabbit IgG coupled to agarose beads followed by solid phase adsorptions to remove any unwanted reactivities, pepsin digestion and chromatographic separation.
Conjugation	Biotin

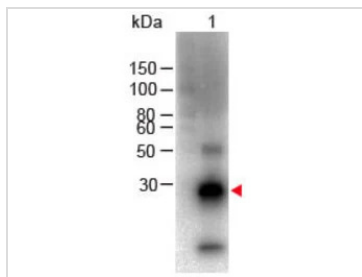
Note

For laboratory research use only. Not for any clinical, therapeutic, or diagnostic use in humans or animals. Not for animal or human consumption.

Purchasers shall not, and agree not to enable third parties to, analyze, copy, reverse engineer or otherwise attempt to determine the structure or sequence of the product.



For full product information, images and publications, please visit our [website](#).

DATA IMAGES

GTX26021 WB Image

WB analysis of rabbit IgG Fc fragment using GTX26021 Goat Anti-Rabbit IgG (Fc fragment) antibody, F(ab')₂ fragment (Biotin).

Loading : 100 ng

Dilution : 1:1000



For full product information, images and publications, please visit our [website](https://www.genetex.com).