

KPNA3 antibody, C-term

Cat. No. GTX26038

Host	Goat
Clonality	Polyclonal
Isotype	IgG
Applications	WB, ICC/IF, IHC-P, FCM, IP
Reactivity	Human, Mouse, Rat

Package
100 µg

Applications

Application Note

*Optimal dilutions/concentrations should be determined by the researcher.

Suggested dilution	Recommended dilution
WB	0.1-0.3µg/ml
ICC/IF	Assay dependent
IHC-P	Assay dependent
FCM	Assay dependent
IP	Assay dependent

Not tested in other applications.

Calculated MW 58 kDa. ([Note](#))

Properties

Form	Liquid
Buffer	TBS, 0.5% BSA
Preservative	0.02% Sodium azide
Storage	Store as concentrated solution. Centrifuge briefly prior to opening vial. For short-term storage (1-2 weeks), store at 4°C. For long-term storage, aliquot and store at -20°C or below. Avoid multiple freeze-thaw cycles.
Concentration	0.50 mg/ml (Please refer to the vial label for the specific concentration.)
Immunogen	Peptide with sequence C-DPTANLQTKEFNF, from the C Terminus of the protein sequence according to NP_002258.2.
Purification	Purified by ammonium sulphate precipitation followed by antigen affinity chromatography
Conjugation	Unconjugated

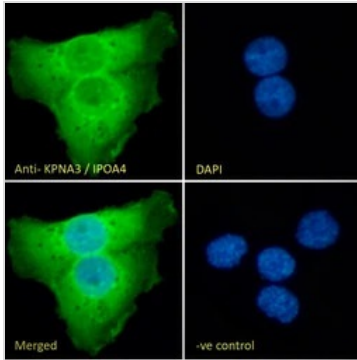


For full product information, images and publications, please visit our [website](#).

For laboratory research use only. Not for any clinical, therapeutic, or diagnostic use in humans or animals. Not for animal or human consumption.

Note

Purchasers shall not, and agree not to enable third parties to, analyze, copy, reverse engineer or otherwise attempt to determine the structure or sequence of the product.

DATA IMAGES

GTx26038 ICC/IF Image

ICC/IF analysis of PFA-fixed A431 cells using GTx26038 KPNA3 antibody, C-term.

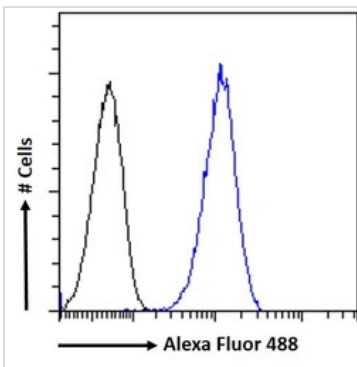
Green : Primary antibody

Blue : DAPI

Negative control: Unimmunized goat IgG (10ug/ml)

Permeabilization : 0.1% Triton X-100

Dilution : 10ug/ml


GTx26038 FCM Image

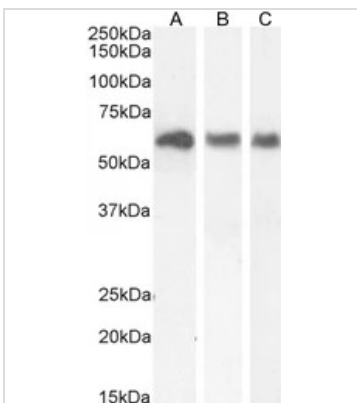
FACS analysis of PFA-fixed A431 cells using GTx26038 KPNA3 antibody, C-term.

Blue line : Primary antibody

Black line : Negative control: Unimmunized goat IgG

Permeabilization : 0.5% Triton X-100

Dilution : 10ug/ml


GTx26038 WB Image

WB analysis of various sample lysates using GTx26038 KPNA3 antibody, C-term.

Lane A: CaCo-2

Lane B: HEK293

Lane C: MCF-7

Loading : 35 µg

Dilution : 0.03µg/ml for A and B, 0.01µg/ml for C



For full product information, images and publications, please visit our [website](https://www.genetex.com).