

## KPNA4 antibody, C-term

Cat. No. GTX26039

Host	Goat
Clonality	Polyclonal
Isotype	IgG
Applications	WB, IHC-P
Reactivity	Human, Mouse

Package  
100 µg

## Applications

## Application Note

\*Optimal dilutions/concentrations should be determined by the researcher.

Suggested dilution	Recommended dilution
WB	0.2-1µg/ml
IHC-P	1-2µg/ml

**Note : Human Testis shows strong nuclear staining of some cells in the seminiferous tubules.**

Not tested in other applications.

Calculated MW 58 kDa. ( [Note](#) )

## Properties

Form	Liquid
Buffer	TBS, 0.5% BSA
Preservative	0.02% Sodium azide
Storage	Store as concentrated solution. Centrifuge briefly prior to opening vial. For short-term storage (1-2 weeks), store at 4°C. For long-term storage, aliquot and store at -20°C or below. Avoid multiple freeze-thaw cycles.
Concentration	0.50 mg/ml (Please refer to the vial label for the specific concentration.)
Immunogen	Peptide with sequence C-NSSANVPTEGFQF, from the C Terminus of the protein sequence according to NP_002259.1.
Purification	Purified by ammonium sulphate precipitation followed by antigen affinity chromatography
Conjugation	Unconjugated

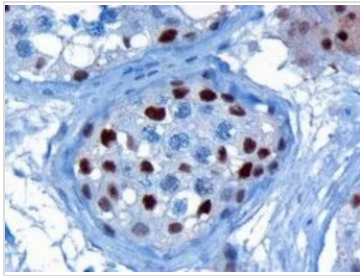
## Note

For laboratory research use only. Not for any clinical, therapeutic, or diagnostic use in humans or animals. Not for animal or human consumption.

Purchasers shall not, and agree not to enable third parties to, analyze, copy, reverse engineer or otherwise attempt to determine the structure or sequence of the product.



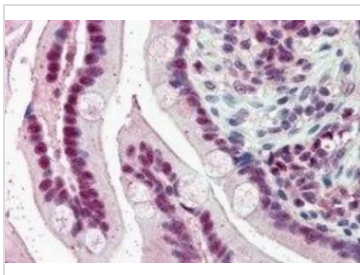
For full product information, images and publications, please visit our [website](#).

**DATA IMAGES**

**GTX26039 IHC-P Image**

IHC-P analysis of human testis using GTX26039 KPNA4 antibody, C-term.

Antigen retrieval : citrate buffer pH 6

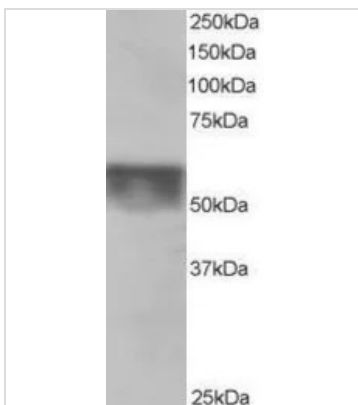
Dilution : 3µg/ml


**GTX26039 IHC-P Image**

IHC-P analysis of human small intestine using GTX26039 KPNA4 antibody, C-term.

Antigen retrieval : citrate buffer pH 6

Dilution : 5µg/ml


**GTX26039 WB Image**

WB analysis of human testis lysate using GTX26039 KPNA4 antibody, C-term.

Dilution : 0.5µg/ml

Loading : 35µg protein in RIPA buffer



For full product information, images and publications, please visit our [website](#).