

AKT antibody

Cat. No. GTX26076

Host	Rabbit
Clonality	Polyclonal
Isotype	IgG
Applications	WB, IP, IHC
Reactivity	Human, Mouse, Rat

References (1)
Package
1 ml

Applications

Application Note

*Optimal dilutions/concentrations should be determined by the researcher.

Suggested dilution	Recommended dilution
WB	Assay dependent
IP	Assay dependent
IHC	Assay dependent

Not tested in other applications.

Properties

Form	Liquid
Buffer	PBS, 0.2% Gelatin
Preservative	0.1% Sodium azide
Storage	Store as concentrated solution. Centrifuge briefly prior to opening vial. Store at 4°C.
Concentration	0.2 mg/ml (Please refer to the vial label for the specific concentration.)
Immunogen	Synthetic peptide mapping to the carboxy terminal domain of human Akt1.
Purification	Purified by affinity chromatography
Conjugation	Unconjugated

Note

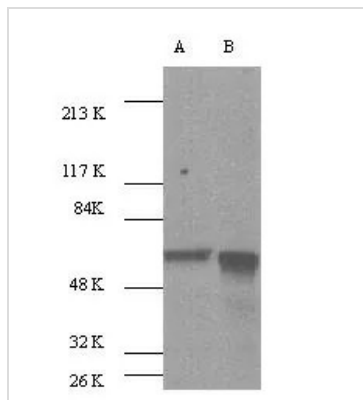
For laboratory research use only. Not for any clinical, therapeutic, or diagnostic use in humans or animals. Not for animal or human consumption.

Purchasers shall not, and agree not to enable third parties to, analyze, copy, reverse engineer or otherwise attempt to determine the structure or sequence of the product.



For full product information, images and publications, please visit our [website](#).

DATA IMAGES



GTX26076 WB Image

WB analysis of various sample lysates using GTX26076 AKT antibody.

Lane 1 : A341 whole cell lysates

Lane 2 : NIH-3T3 whole cell lysates



For full product information, images and publications, please visit our [website](https://www.genetex.com).