

Goat Anti-Rabbit IgG (F(ab')₂) antibody, F(ab')₂ fragment, pre-adsorbed (HRP)

Cat. No. GTX26112

| | |
|---------------------|-------------------------|
| Host | Goat |
| Clonality | Polyclonal |
| Isotype | IgG F(ab') ₂ |
| Applications | WB, ELISA, IHC |
| Reactivity | Rabbit |

Package
250 µg

Applications

Application Note

*Optimal dilutions/concentrations should be determined by the researcher.

| Suggested dilution | Recommended dilution |
|--------------------|----------------------|
| WB | 1:2000-1:10000 |
| ELISA | 1:100000 |
| IHC | 1:1000-1:5000 |

Not tested in other applications.

Product Note

Pre-adsorbed with Bovine, Horse, Human, Mouse, Rat and Sheep serum proteins. May react with immunoglobulins from other species.

Properties

| | |
|----------------------|-------------------------------------------------------------------------------------------------------------------------------------------------------------------------------------------------------------------------------|
| Form | Liquid |
| Buffer | 20mM Potassium Phosphate, 150mM NaCl, 1% BSA |
| Preservative | 0.01% Gentamicin Sulfate |
| Storage | Store as concentrated solution. Centrifuge briefly prior to opening vial. For short-term storage (1-2 weeks), store at 4°C. For long-term storage, aliquot and store at -20°C or below. Avoid multiple freeze-thaw cycles. |
| Concentration | 1 mg/ml (Please refer to the vial label for the specific concentration.) |
| Immunogen | Rabbit IgG F(ab') ₂ fragment |
| Purification | Purified by antigen-affinity chromatography using Rabbit IgG coupled to agarose beads followed by solid phase adsorptions to remove any unwanted reactivities, pepsin digestion and chromatographic separation. From serum |
| Conjugation | Horseradish peroxidase(HRP) |



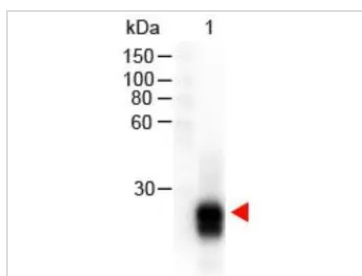
For full product information, images and publications, please visit our [website](#).

For laboratory research use only. Not for any clinical, therapeutic, or diagnostic use in humans or animals. Not for animal or human consumption.

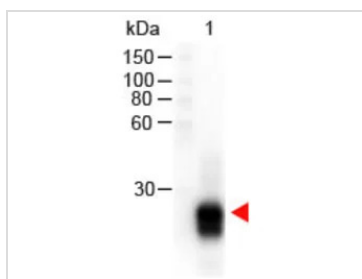
Note

Purchasers shall not, and agree not to enable third parties to, analyze, copy, reverse engineer or otherwise attempt to determine the structure or sequence of the product.

DATA IMAGES

**GTX26112 WB Image**

Western Blot of GTX26112 Sample: Rabbit IgG. Load: 100 ng per lane. Secondary antibody: GTX26112 at 1:1,000 for 60 min at RT. Predicted/Observed size: 28 kDa for Rabbit IgG.

**GTX26112 WB Image**

WB analysis of rabbit IgG (F(ab')₂) using GTX26112 Goat Anti-Rabbit IgG (F(ab')₂) antibody, F(ab')₂ fragment, pre-adsorbed (HRP).

Loading : 100 ng

Dilution : 1:1000



For full product information, images and publications, please visit our [website](#).