

Goat Anti-Rat IgG antibody, F(ab')<sub>2</sub> fragment, pre-adsorbed (FITC)

Cat. No. GTX26115

Host	Goat
Clonality	Polyclonal
Isotype	IgG F(ab') <sub>2</sub>
Application	WB, ICC/IF, FACS, ELISA
Reactivity	Rat

Reference ( 1 )

Package

250 µg

## APPLICATION

## Application Note

\*Optimal dilutions/concentrations should be determined by the researcher.

Suggested dilution	Recommended dilution
WB	Assay dependent
ICC/IF	1:1000-1:5000
FACS	1:500-1:2500
ELISA	1:10000-1:50000

Not tested in other applications.

## Product Note

Pre-adsorbed with Bovine, Horse, Human, Mouse, Rabbit and Sheep serum proteins. May react with immunoglobulins from other species.

## PROPERTIES

Form	Liquid
Buffer	20mM Potassium Phosphate, 150mM NaCl, 1% BSA
Preservative	0.01% Sodium azide
Storage	Store as concentrated solution. Centrifuge briefly prior to opening vial. For short-term storage (1-2 weeks), store at 4°C. For long-term storage, aliquot and store at -20°C or below. Avoid multiple freeze-thaw cycles. Protect from light.
Concentration	0.5 mg/ml (Please refer to the vial label for the specific concentration.)
Immunogen	Rat IgG whole molecule
Purification	Purified by antigen-affinity chromatography using Rat IgG coupled to agarose beads followed by solid phase adsorptions to remove any unwanted reactivities, pepsin digestion and chromatographic separation. From serum
Conjugation	Fluorescein isothiocyanate (FITC) Ratio : 5.3 molecules FITC per Goat IgG F(ab') <sub>2</sub> molecule.



For full product information, images and publications, please visit our [website](#).

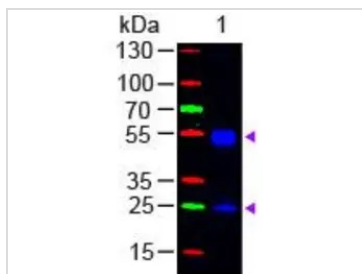
Date 2024 / 05 / 15 Page 1 of 2

For laboratory research use only. Not for any clinical, therapeutic, or diagnostic use in humans or animals. Not for animal or human consumption.

## Note

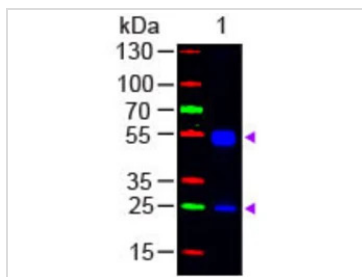
Purchasers shall not, and agree not to enable third parties to, analyze, copy, reverse engineer or otherwise attempt to determine the structure or sequence of the product.

## DATA IMAGES



### GTx26115 WB Image

Western Blot of GTx26115 Sample: Rat IgG Load: 50 ng per lane Secondary antibody: GTx26115 at 1:1,000 for 60 min at RT Predicted/Observed size: 55 and 28 kDa.



### GTx26115 WB Image

WB analysis of rat IgG using GTx26115 Goat Anti-Rat IgG antibody, F(ab')<sub>2</sub> fragment, pre-adsorbed (FITC).  
Loading : 50 ng  
Dilution : 1:1000



For full product information, images and publications, please visit our [website](https://www.genetex.com).