

CD11a antibody [38]

Cat. No. GTX26132

Host	Mouse
Clonality	Monoclonal
Isotype	IgG2a
Application	ICC/IF, IHC-Fr, FACS, IP, Blocking, Neutralizing/Inhibition
Reactivity	Human, Mouse

Reference (6)
Package
100 µg

APPLICATION

Application Note

*Optimal dilutions/concentrations should be determined by the researcher.

Suggested dilution	Recommended dilution
ICC/IF	Assay dependent
IHC-Fr	Assay dependent
FACS	1/50-1/100
IP	Assay dependent
Blocking	Assay dependent
Neutralizing/Inhibition	Assay dependent

Note : Use 10µl of the suggested working dilution to label 10⁶ cells in 100µl.

Not tested in other applications.

Calculated MW 129 kDa. ([Note](#))

PROPERTIES

Form	Liquid
Buffer	PBS
Preservative	0.09% Sodium azide
Storage	Store as concentrated solution. Centrifuge briefly prior to opening vial. For short-term storage (1-2 weeks), store at 4°C. For long-term storage, aliquot and store at -20°C or below. Avoid multiple freeze-thaw cycles.
Concentration	1 mg/ml (Please refer to the vial label for the specific concentration.)
Purification	Protein A purified From tissue culture supernatant
Conjugation	Unconjugated



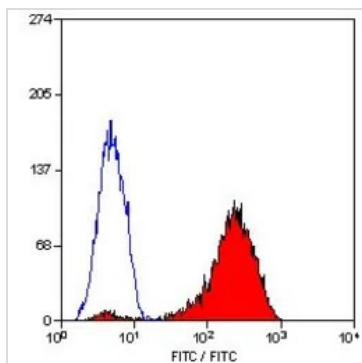
For full product information, images and publications, please visit our [website](#).

For laboratory research use only. Not for any clinical, therapeutic, or diagnostic use in humans or animals. Not for animal or human consumption.

Note

Purchasers shall not, and agree not to enable third parties to, analyze, copy, reverse engineer or otherwise attempt to determine the structure or sequence of the product.

DATA IMAGES



GTX26132 FACS Image

FACS analysis of human peripheral blood lymphocytes using GTX26132 CD11a antibody [38].



For full product information, images and publications, please visit our [website](#).

Date 2024 / 04 / 29 Page 2 of 2