

## alpha Tubulin antibody [YOL1/34]

**Cat. No. GTX26161**

<b>Host</b>	Rat
<b>Clonality</b>	Monoclonal
<b>Isotype</b>	IgG2a
<b>Applications</b>	WB, ICC/IF, IHC-Fr, ELISA, RIA
<b>Reactivity</b>	Human, Mouse, Yeast, Drosophila, Arabidopsis thaliana, Ashbya, Asplenium nidus, Naegleria, Platyzoa, Seagrass (Cymodocea nodosa)

References ( 4 )

Package

100 µg

## Applications

**Application Note**

\*Optimal dilutions/concentrations should be determined by the researcher.

Suggested dilution	Recommended dilution
WB	Assay dependent
ICC/IF	Assay dependent
IHC-Fr	Assay dependent
ELISA	10µg/ml (as detecting antibody)
RIA	Assay dependent

Not tested in other applications.

## Properties

<b>Form</b>	Liquid
<b>Buffer</b>	PBS
<b>Preservative</b>	0.09% Sodium azide
<b>Storage</b>	Store as concentrated solution. Centrifuge briefly prior to opening vial. For short-term storage (1-2 weeks), store at 4°C. For long-term storage, aliquot and store at -20°C or below. Avoid multiple freeze-thaw cycles.
<b>Concentration</b>	1.0 mg/ml (Please refer to the vial label for the specific concentration.)
<b>Immunogen</b>	Yeast tubulin
<b>Purification</b>	Protein G purified From tissue culture supernatant
<b>Conjugation</b>	Unconjugated



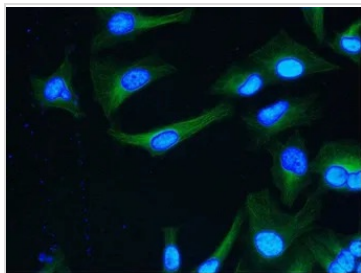
For full product information, images and publications, please visit our [website](#).

For laboratory research use only. Not for any clinical, therapeutic, or diagnostic use in humans or animals. Not for animal or human consumption.

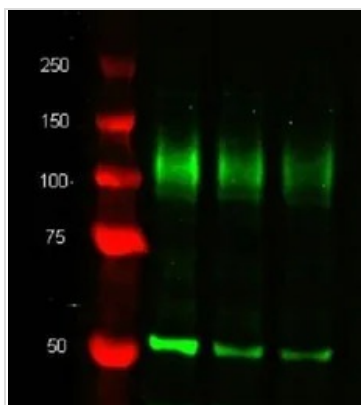
**Note**

Purchasers shall not, and agree not to enable third parties to, analyze, copy, reverse engineer or otherwise attempt to determine the structure or sequence of the product.

## DATA IMAGES

**GTX26161 ICC/IF Image**

ICC/IF analysis of HeLa cells using GTX26161 alpha Tubulin antibody [YOL1/34].

**GTX26161 WB Image**

Western blot analysis of CD107b on J774 cell lysate probed with Rat anti Mouse CD107b (GTX42498) at 1/500, 1/1000, 1/2000. Rat anti tubulin alpha (GTX26161) is included as a loading control.



For full product information, images and publications, please visit our [website](#).