

alpha Tubulin antibody [YOL1/34]

Cat. No. GTX26161

Host	Rat
Clonality	Monoclonal
Isotype	IgG2a
Applications	WB, ICC/IF, IHC-Fr, ELISA, RIA
Reactivity	Human, Mouse, Yeast, Drosophila, Arabidopsis thaliana, Ashbya, Asplenium nidus, Naegleria, Platyzoa, Seagrass (Cymodocea nodosa)

References (3)

Package

100 µg

Applications

Application Note

*Optimal dilutions/concentrations should be determined by the researcher.

Suggested dilution	Recommended dilution
WB	Assay dependent
ICC/IF	Assay dependent
IHC-Fr	Assay dependent
ELISA	10µg/ml (as detecting antibody)
RIA	Assay dependent

Not tested in other applications.

Properties

Form	Liquid
Buffer	PBS
Preservative	0.09% Sodium azide
Storage	Store as concentrated solution. Centrifuge briefly prior to opening vial. For short-term storage (1-2 weeks), store at 4°C. For long-term storage, aliquot and store at -20°C or below. Avoid multiple freeze-thaw cycles.
Concentration	1.0 mg/ml (Please refer to the vial label for the specific concentration.)
Immunogen	Yeast tubulin
Purification	Protein G purified From tissue culture supernatant
Conjugation	Unconjugated



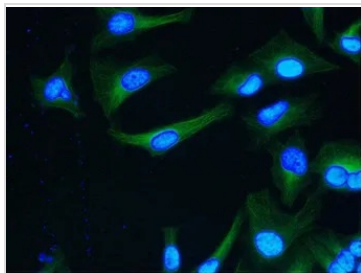
For full product information, images and publications, please visit our [website](#).

For laboratory research use only. Not for any clinical, therapeutic, or diagnostic use in humans or animals. Not for animal or human consumption.

Note

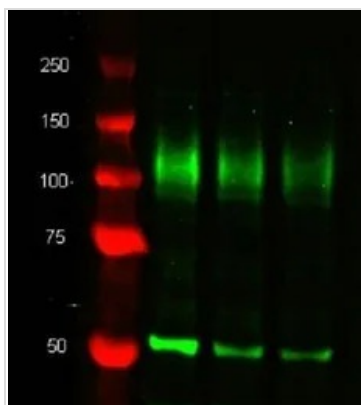
Purchasers shall not, and agree not to enable third parties to, analyze, copy, reverse engineer or otherwise attempt to determine the structure or sequence of the product.

DATA IMAGES



GTX26161 ICC/IF Image

ICC/IF analysis of HeLa cells using GTX26161 alpha Tubulin antibody [YOL1/34].



GTX26161 WB Image

Western blot analysis of CD107b on J774 cell lysate probed with Rat anti Mouse CD107b (GTX42498) at 1/500, 1/1000, 1/2000. Rat anti tubulin alpha (GTX26161) is included as a loading control.



For full product information, images and publications, please visit our [website](https://www.genetex.com).