

beta Actin antibody [AC-15]

Cat. No. GTX26276

Host	Mouse
Clonality	Monoclonal
Isotype	IgG1
Applications	WB, ICC/IF, IHC-P, IP, ELISA
Reactivity	Human, Mouse, Rat, Rabbit, Sheep, Bovine, Cat, Dog, Chicken, Guinea pig, Pig, Monkey, Carp, Hirudo medicinalis

References (73)

Package

100 µl

Applications

Application Note

*Optimal dilutions/concentrations should be determined by the researcher.

Suggested dilution	Recommended dilution
WB	1:5,000-1:10,000
ICC/IF	1:1,000-1:2,000
IHC-P	Assay dependent
IP	Assay dependent
ELISA	Assay dependent

Not tested in other applications.

Calculated MW 42 kDa. ([Note](#))

Product Note KO/KD validation is based on published data (PMID: 29163025).

Properties

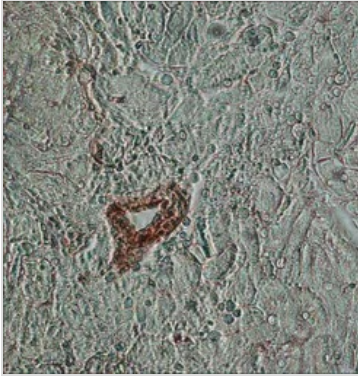
Form	Liquid
Buffer	Ascites
Preservative	15mM Sodium azide
Storage	Store as concentrated solution. Centrifuge briefly prior to opening vial. For short-term storage (1-2 weeks), store at 4°C. For long-term storage, aliquot and store at -20°C or below. Avoid multiple freeze-thaw cycles.
Immunogen	slightly modified β -cytoplasmic actin N-terminal peptide, Ac-Asp-Asp-Asp-Ile-Ala-Ala-Leu-Val-Ile-Asp-Asn-Gly-Ser-Gly-Lys, conjugated to KLH.
Purification	Unpurified
Conjugation	Unconjugated

For full product information, images and publications, please visit our [website](#).

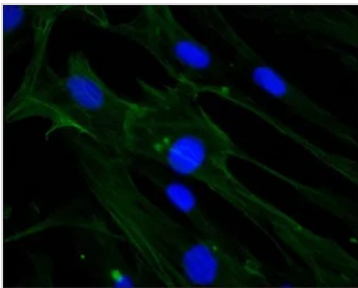
For laboratory research use only. Not for any clinical, therapeutic, or diagnostic use in humans or animals. Not for animal or human consumption.

Note

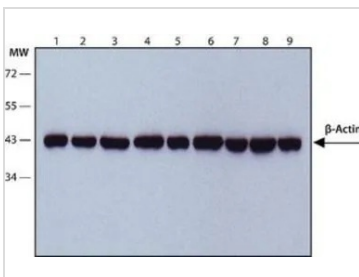
Purchasers shall not, and agree not to enable third parties to, analyze, copy, reverse engineer or otherwise attempt to determine the structure or sequence of the product.

DATA IMAGES

GTx26276 IHC-P Image

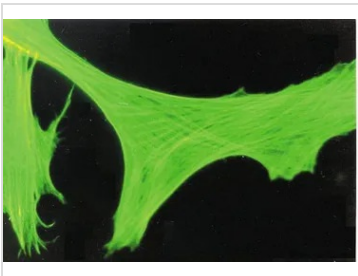
IHC-P analysis of human heart tissue using GTx26276 beta Actin antibody [AC-15] at 1:1,000.


GTx26276 ICC/IF Image

ICC/IF analysis of HS-68 cells using GTx26276 beta Actin antibody [AC-15] at 1:1000 (green) with DAPI (blue). Cells were fixed and permeabilized with methanol followed by methanol:acetone.


GTx26276 WB Image

WB analysis of (1) HeLa, (2) Jurkat, (3) COS7, (4) NIH3T3, (5) PC-12, (6) RAT2, (7) CHO, (8) MDBK and (9) MDCK lysates using beta Actin antibody [AC-15] at 1:5,000.


GTx26276 ICC/IF Image

ICC/IF analysis of FS-11 cells using GTx26276 beta Actin antibody [AC-15].



For full product information, images and publications, please visit our [website](#).