

58K Golgi protein antibody [58K-9]

Cat. No. GTX26284

Host	Mouse
Clonality	Monoclonal
Isotype	IgG1
Applications	WB, ICC/IF, IHC-P, IP, Dot, EM
Reactivity	Human, Mouse, Rat, Bovine, Dog, Hamster, Pig, Monkey, Kangaroo rat

References (5)

Package

100 µl

Applications

Application Note

*Optimal dilutions/concentrations should be determined by the researcher.

Suggested dilution	Recommended dilution
WB	1:5,000
ICC/IF	1:50
IHC-P	Assay dependent
IP	Assay dependent
Dot	Assay dependent
EM	Assay dependent

Not tested in other applications.

Calculated MW 59 kDa. ([Note](#))

Product Note The antibody recognizes an epitope located on the microtubule-binding peripheral Golgi membrane 58 kDa protein. It is also useful for studies on the effect of microtubule-perturbing agents on the Golgi apparatus.

Properties

Form	Liquid
Buffer	Ascites
Preservative	15mM Sodium azide
Storage	Store as concentrated solution. Centrifuge briefly prior to opening vial. For short-term storage (1-2 weeks), store at 4°C. For long-term storage, aliquot and store at -20°C or below. Avoid multiple freeze-thaw cycles.
Immunogen	Golgi 58K protein from rat liver.
Purification	Unpurified
Conjugation	Unconjugated



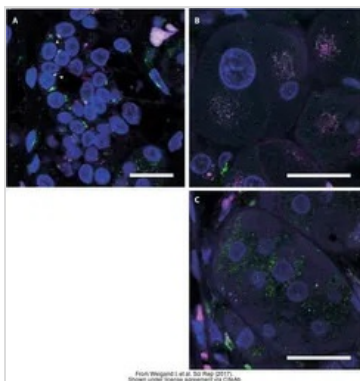
For full product information, images and publications, please visit our [website](#).

For laboratory research use only. Not for any clinical, therapeutic, or diagnostic use in humans or animals. Not for animal or human consumption.

Note

Purchasers shall not, and agree not to enable third parties to, analyze, copy, reverse engineer or otherwise attempt to determine the structure or sequence of the product.

DATA IMAGES



GTX26284 IHC-P Image

The data was published in the journal Sci Rep in 2017. [PMID: 28250426](https://pubmed.ncbi.nlm.nih.gov/28250426/)



For full product information, images and publications, please visit our [website](https://www.genetex.com).