

beta Catenin antibody [6F9]

Cat. No. GTX26300

Host	Mouse
Clonality	Monoclonal
Isotype	IgG1
Applications	WB, ICC/IF, IHC-Fr
Reactivity	Human, Mouse, Bovine, Dog, Chicken

References (1)

Package

100 µl

Applications

Application Note

*Optimal dilutions/concentrations should be determined by the researcher.

Suggested dilution	Recommended dilution
WB	1:1,000
ICC/IF	1:1,000
IHC-Fr	Assay dependent

Not tested in other applications.

Product Note The antibody does not cross-react with plakoglobin (γ -catenin).

Properties

Form	Liquid
Buffer	Ascites
Preservative	15mM Sodium azide
Storage	Store as concentrated solution. Centrifuge briefly prior to opening vial. For short-term storage (1-2 weeks), store at 4°C. For long-term storage, aliquot and store at -20°C or below. Avoid multiple freeze-thaw cycles.
Immunogen	recombinant chicken β -catenin.
Purification	Unpurified
Conjugation	Unconjugated

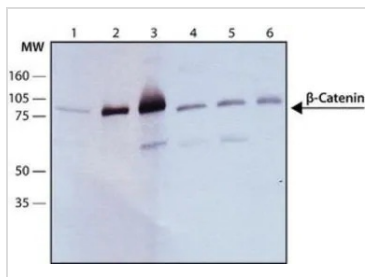
Note

For laboratory research use only. Not for any clinical, therapeutic, or diagnostic use in humans or animals. Not for animal or human consumption.

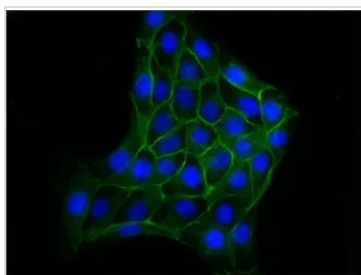
Purchasers shall not, and agree not to enable third parties to, analyze, copy, reverse engineer or otherwise attempt to determine the structure or sequence of the product.



For full product information, images and publications, please visit our [website](#).

DATA IMAGES

GTX26300 WB Image

WB analysis of 1(1) HeLa (2) MBDK (3) MDCK (4) NRK (5) 3T3 (6) Chicken fibroblast cells using GTX26300 beta Catenin antibody[6F9] at 1:500.


GTX26300 ICC/IF Image

ICC/IF analysis of MDCK cells using GTX26300 beta Catenin antibody[6F9] at 1:500 (green) with DAPI (blue).



For full product information, images and publications, please visit our [website](https://www.genetex.com).