

Collagen I antibody [COL-1]

Cat. No. GTX26308

Host	Mouse
Clonality	Monoclonal
Isotype	IgG1
Applications	WB, ICC/IF, IHC-P, IHC-Fr, IP, Dot, ELISA, IHC
Reactivity	Human, Mouse, Rat, Rabbit, Bovine, Pig, Deer

References (75)

Package

100 µl

PRODUCT

Summary

Collagen I antibody (Collagen 1 antibody) detects type I collagen, a fibrillar type collagen found in almost all connective tissues. The main isoform of type I collagen is a heterotrimer of two $\alpha 1$ and one $\alpha 2$ chains subject to significant posttranslational modification and crosslinking. Mutations in type I collagen are found in osteogenesis imperfecta and Ehlers-Danlos syndrome, but this collagen is also linked to other connective tissue disease as well as disorders associated with aging.

Applications

Application Note

*Optimal dilutions/concentrations should be determined by the researcher.

Suggested dilution	Recommended dilution
WB	Assay dependent
ICC/IF	Assay dependent
IHC-P	Assay dependent
IHC-Fr	1:2000
IP	Assay dependent
Dot	Assay dependent
ELISA	Assay dependent
IHC	Assay dependent

Not tested in other applications.

Calculated MW 139 kDa. ([Note](#))

Product Note

The antibody is reactive with the native (helical) form of collagen type I in ELISA and dot blot. The product is not reactive when tested on thermally denatured molecules. In immunohistochemical staining of acetone-fixed and unfixed frozen sections, a strong staining of connective tissue fibers is seen. Using the dot blot and ELISA techniques, the antibody shows no cross-reactivity with collagen types, II, III, IV, V, VI, VII, IX, X and XI. The epitope recognized by the antibody is sensitive to routine formalin fixation and paraffin embedding.

Properties

Form Liquid



For full product information, images and publications, please visit our [website](#).

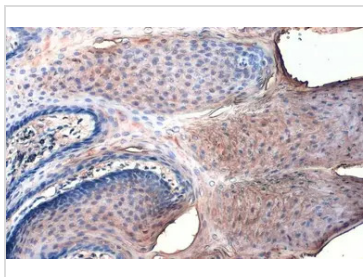
Buffer	Ascites
Preservative	15mM Sodium azide
Storage	Store as concentrated solution. Centrifuge briefly prior to opening vial. For short-term storage (1-2 weeks), store at 4°C. For long-term storage, aliquot and store at -20°C or below. Avoid multiple freeze-thaw cycles.
Immunogen	bovine skin collagen type I
Purification	Unpurified
Conjugation	Unconjugated

Note

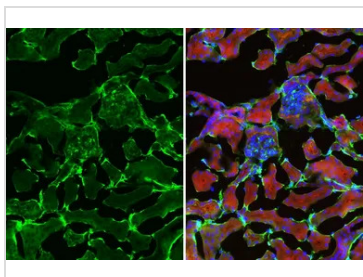
For laboratory research use only. Not for any clinical, therapeutic, or diagnostic use in humans or animals. Not for animal or human consumption.

Purchasers shall not, and agree not to enable third parties to, analyze, copy, reverse engineer or otherwise attempt to determine the structure or sequence of the product.

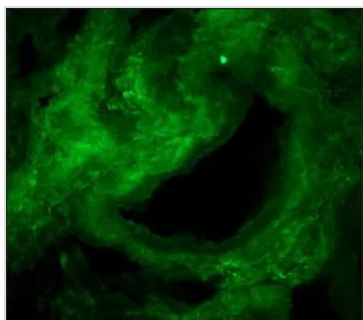
DATA IMAGES

**GTX26308 IHC-P Image**

Collagen I antibody [COL-1] detects Collagen I protein at cell membrane by immunohistochemical analysis.
 Sample: Paraffin-embedded rabbit tongue.
 Collagen I stained by Collagen I antibody [COL-1] (GTX26308) diluted at 1:200.
 Antigen Retrieval: Citrate buffer, pH 6.0, 15 min

**GTX26308 IHC-Fr Image**

Collagen I antibody [COL-1] detects Collagen I protein by immunohistochemical analysis.
 Sample: Frozen-sectioned mouse kidney.
 Green: Collagen I stained by Collagen I antibody [COL-1] (GTX26308) diluted at 1:250.
 Red: Vimentin antibody [HL1506] (GTX636980) diluted at 1:250.
 Blue: Fluoroshield with DAPI (GTX30920).

**GTX26308 IHC-Fr Image**

IHC-Fr analysis of human tongue tissue using GTX26308 Collagen I antibody [COL-1] at 1:2,000.



For full product information, images and publications, please visit our [website](#).