

## Collagen I antibody [COL-1]

Cat. No. GTX26308

Host	Mouse
Clonality	Monoclonal
Isotype	IgG1
Applications	WB, ICC/IF, IHC-P, IHC-Fr, IP, Dot, ELISA, IHC
Reactivity	Human, Mouse, Rat, Rabbit, Bovine, Pig, Deer

References ( 66 )

Package

100 µl

## PRODUCT

## Summary

Collagen I antibody (Collagen 1 antibody) detects type I collagen, a fibrillar type collagen found in almost all connective tissues. The main isoform of type I collagen is a heterotrimer of two  $\alpha 1$  and one  $\alpha 2$  chains subject to significant posttranslational modification and crosslinking. Mutations in type I collagen are found in osteogenesis imperfecta and Ehlers-Danlos syndrome, but this collagen is also linked to other connective tissue disease as well as disorders associated with aging.

## Applications

## Application Note

\*Optimal dilutions/concentrations should be determined by the researcher.

Suggested dilution	Recommended dilution
WB	Assay dependent
ICC/IF	Assay dependent
IHC-P	Assay dependent
IHC-Fr	1:2000
IP	Assay dependent
Dot	Assay dependent
ELISA	Assay dependent
IHC	Assay dependent

Not tested in other applications.

**Calculated MW** 139 kDa. ( [Note](#) )

## Product Note

The antibody is reactive with the native (helical) form of collagen type I in ELISA and dot blot. The product is not reactive when tested on thermally denatured molecules. In immunohistochemical staining of acetone-fixed and unfixed frozen sections, a strong staining of connective tissue fibers is seen. Using the dot blot and ELISA techniques, the antibody shows no cross-reactivity with collagen types, II, III, IV, V, VI, VII, IX, X and XI. The epitope recognized by the antibody is sensitive to routine formalin fixation and paraffin embedding.

## Properties

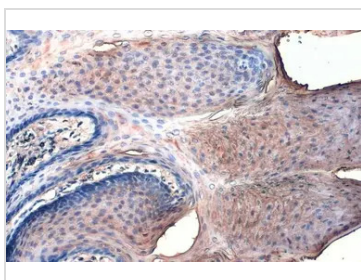
**Form** Liquid



For full product information, images and publications, please visit our [website](#).

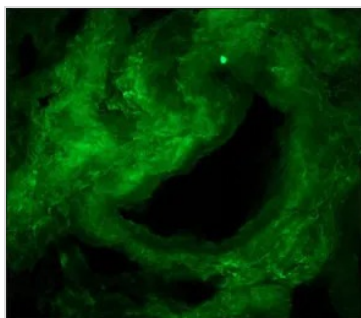
<b>Buffer</b>	Ascites
<b>Preservative</b>	15mM Sodium azide
<b>Storage</b>	Store as concentrated solution. Centrifuge briefly prior to opening vial. For short-term storage (1-2 weeks), store at 4°C. For long-term storage, aliquot and store at -20°C or below. Avoid multiple freeze-thaw cycles.
<b>Immunogen</b>	bovine skin collagen type I
<b>Purification</b>	Unpurified
<b>Conjugation</b>	Unconjugated
<b>Note</b>	<p>For laboratory research use only. Not for any clinical, therapeutic, or diagnostic use in humans or animals. Not for animal or human consumption.</p> <p>Purchasers shall not, and agree not to enable third parties to, analyze, copy, reverse engineer or otherwise attempt to determine the structure or sequence of the product.</p>

#### DATA IMAGES



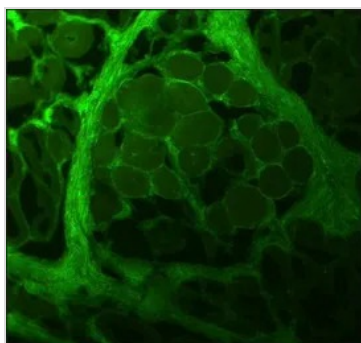
##### GTX26308 IHC-P Image

Collagen I antibody [COL-1] detects Collagen I protein at cell membrane by immunohistochemical analysis.  
Sample: Paraffin-embedded rabbit tongue.  
Collagen I stained by Collagen I antibody [COL-1] (GTX26308) diluted at 1:200.  
Antigen Retrieval: Citrate buffer, pH 6.0, 15 min



##### GTX26308 IHC-Fr Image

IHC-Fr analysis of human tongue tissue using GTX26308 Collagen I antibody [COL-1] at 1:2,000.



##### GTX26308 IHC-Fr Image

IHC-Fr analysis of pig tongue tissue using GTX26308 Collagen I antibody [COL-1] at 1:4,000.



For full product information, images and publications, please visit our [website](#).