

Nestin antibody [3k1]

Cat. No. GTX26320

Host	Mouse
Clonality	Monoclonal
Isotype	IgG1
Applications	ICC/IF, FCM
Reactivity	Human

Package
50 µg

Applications

Application Note

*Optimal dilutions/concentrations should be determined by the researcher.

Suggested dilution	Recommended dilution
ICC/IF	Assay dependent
FCM	2.5µg labels 10 ⁶ cells

Not tested in other applications.

Properties

Form	Liquid
Buffer	PBS, 5% Trehalose
Preservative	No preservatives
Storage	Store as concentrated solution. Centrifuge briefly prior to opening vial. For short-term storage (1-2 weeks), store at 4°C. For long-term storage, aliquot and store at -20°C or below. Avoid multiple freeze-thaw cycles.
Concentration	Batch dependent (Please refer to the vial label for the specific concentration.)
Immunogen	NS0 cells transfected with human Nestin.
Purification	Protein G purified
Conjugation	Unconjugated

Note

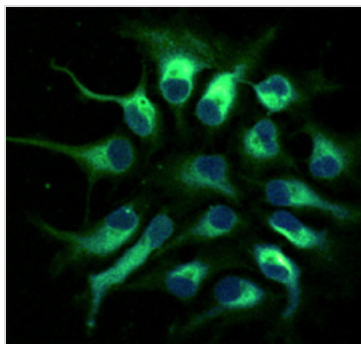
For laboratory research use only. Not for any clinical, therapeutic, or diagnostic use in humans or animals. Not for animal or human consumption.

Purchasers shall not, and agree not to enable third parties to, analyze, copy, reverse engineer or otherwise attempt to determine the structure or sequence of the product.



For full product information, images and publications, please visit our [website](#).

DATA IMAGES


GTX26320 ICC/IF Image

ICC/IF analysis of immersion fixed human fetal neural progenitor cells using GTX26320 Nestin antibody [3k1].

Dilution: 10ug/ml



For full product information, images and publications, please visit our [website](#).