

## CD11b antibody [M1/70.15]

Cat. No. GTX26332

Host	Rat
Clonality	Monoclonal
Isotype	IgG2b
Applications	ICC/IF, IHC-P, IHC-Fr, FCM, IP
Reactivity	Human, Mouse, Rabbit

References ( 5 )

Package

100 µg

## Applications

## Application Note

\*Optimal dilutions/concentrations should be determined by the researcher.

Suggested dilution	Recommended dilution
ICC/IF	Assay dependent
IHC-P	Assay dependent
IHC-Fr	Assay dependent
FCM	1/50-1/200
IP	Assay dependent

**Note : Use 10µl of the suggested working dilution to label 10<sup>6</sup> cells in 100µl.**

Not tested in other applications.

## Properties

Form	Liquid
Buffer	PBS
Preservative	0.09% Sodium azide
Storage	Store as concentrated solution. Centrifuge briefly prior to opening vial. For short-term storage (1-2 weeks), store at 4°C. For long-term storage, aliquot and store at -20°C or below. Avoid multiple freeze-thaw cycles.
Concentration	1.0 mg/ml (Please refer to the vial label for the specific concentration.)
Immunogen	T cell enriched splenocytes from B10 mice.
Purification	Protein G purified From tissue culture supernatant
Conjugation	Unconjugated

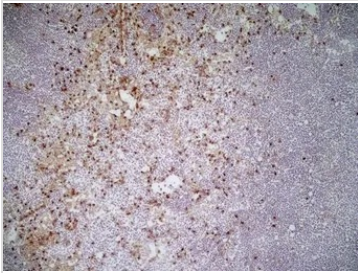


For full product information, images and publications, please visit our [website](#).

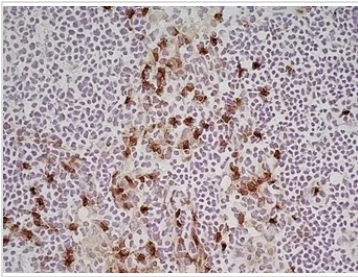
For laboratory research use only. Not for any clinical, therapeutic, or diagnostic use in humans or animals. Not for animal or human consumption.

**Note**

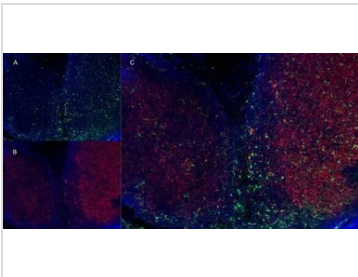
Purchasers shall not, and agree not to enable third parties to, analyze, copy, reverse engineer or otherwise attempt to determine the structure or sequence of the product.

**DATA IMAGES**

**GTX26332 IHC-Fr Image**

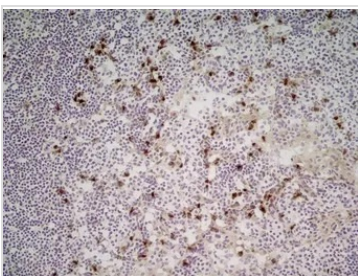
IHC-Fr analysis of mouse lymph node tissue using GTX26332 CD11b antibody [M1/70.15].


**GTX26332 IHC-Fr Image**

IHC-Fr analysis of mouse lymph node tissue using GTX26332 CD11b antibody [M1/70.15].


**GTX26332 IHC-Fr Image**

IHC-Fr staining of mouse lymph node using Rat anti Mouse CD11b antibody (GTX26332), green in A and Rat anti Mouse CD8 antibody (GTX74642), red in B, Merged image in C


**GTX26332 IHC-Fr Image**

IHC-Fr analysis of mouse lymph node tissue using GTX26332 CD11b antibody [M1/70.15].



For full product information, images and publications, please visit our [website](https://www.genetex.com).