

# HLA-DR antibody [YD1/63.4.10]

**Cat. No. GTX26340**

<b>Host</b>	Rat
<b>Clonality</b>	Monoclonal
<b>Isotype</b>	IgG2a
<b>Applications</b>	IHC-P, IHC-Fr, FCM
<b>Reactivity</b>	Human

**Package**  
100 µg

## Applications

### Application Note

FACS: Use at an assay dependant dilution. IHC-Fr/IHC-P: Use at an assay dependant dilution. Optimal dilutions/concentrations should be determined by the end user.

### Product Note

Detects a monomorphic determinant on HLA-DR, a human Class II histocompatibility antigen. Reacts with B lymphocytes, monocytes, macrophages, activated T cells, thymic epithelium, B cell dependent areas of spleen and lymph nodes, and B cell lymphomas. It inhibits T cell function at the clonal level.

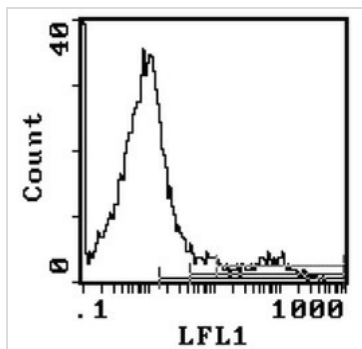
## Properties

<b>Form</b>	Liquid
<b>Buffer</b>	PBS
<b>Preservative</b>	0.02% Sodium azide
<b>Storage</b>	Store as concentrated solution. Centrifuge briefly prior to opening vial. For short-term storage (1-2 weeks), store at 4°C. For long-term storage, aliquot and store at -20°C or below. Avoid multiple freeze-thaw cycles.
<b>Concentration</b>	1 mg/ml (Please refer to the vial label for the specific concentration.)
<b>Immunogen</b>	DAUDI cells
<b>Purification</b>	Protein G affinity purified.
<b>Conjugation</b>	Unconjugated
<b>Note</b>	For laboratory research use only. Not for any clinical, therapeutic, or diagnostic use in humans or animals. Not for animal or human consumption.  Purchasers shall not, and agree not to enable third parties to, analyze, copy, reverse engineer or otherwise attempt to determine the structure or sequence of the product.



For full product information, images and publications, please visit our [website](#).

## DATA IMAGES



### GTX26340 FCM Image

Staining of peripheral blood lymphocytes using HLA-DR antibody (GTX26340) and purified rat IgG2a isotype control.



For full product information, images and publications, please visit our [website](#).