

pan Cytokeratin antibody [PCK-26]

Cat. No. GTX26401

Host	Mouse
Clonality	Monoclonal
Isotype	IgG1
Applications	WB, ICC/IF, IHC-P, IHC-Fr, FCM, Dot, Blocking, IHC, Multiplexing
Reactivity	Human, Mouse, Rat, Rabbit, Goat, Sheep, Bovine, Cat, Dog, Hamster, Chicken, Guinea pig, Pig, Carp, Lizard, Snake

References (22)

Package

100 µl

PRODUCT

Summary

Pan-Cytokeratin antibody [PCK-26] is a mouse monoclonal antibody that detects multiple cytokeratins (i.e., Type II cytokeratins 1, 5, 6, and 8), a group of intermediate filament proteins present in most human epithelial tissues. This reagent is a broad spectrum antibody that reacts with a variety of normal, reactive, and neoplastic epithelial tissues, as well as simple, cornifying, and non-cornifying squamous epithelia and pseudostratified epithelia.

Applications

Application Note

*Optimal dilutions/concentrations should be determined by the researcher.

Suggested dilution	Recommended dilution
WB	Assay dependent
ICC/IF	Assay dependent
IHC-P	1:300
IHC-Fr	Assay dependent
FCM	Assay dependent
Dot	Assay dependent
Blocking	Assay dependent
IHC	Assay dependent
Multiplexing	Assay dependent

Not tested in other applications.

Product Note

The antibody recognizes an epitope located on the Type II cytokeratins 1, 5, 6, and 8. PCK-26 is a broad spectrum antibody which reacts specifically with a variety of normal, reactive, and neoplastic epithelial tissues. The antibody reacts with simple, cornifying, and non-cornifying squamous epithelia and pseudostratified epithelia.

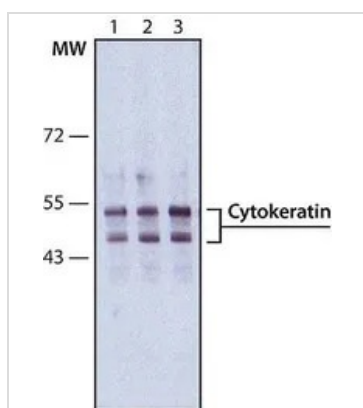
Properties

Form	Liquid
Buffer	Ascites



For full product information, images and publications, please visit our [website](#).

Preservative	15mM Sodium azide
Storage	Store as concentrated solution. Centrifuge briefly prior to opening vial. For short-term storage (1-2 weeks), store at 4°C. For long-term storage, aliquot and store at -20°C or below. Avoid multiple freeze-thaw cycles.
Immunogen	cytokeratin from human epidermis.
Purification	Unpurified
Conjugation	Unconjugated
Note	<p>For laboratory research use only. Not for any clinical, therapeutic, or diagnostic use in humans or animals. Not for animal or human consumption.</p> <p>Purchasers shall not, and agree not to enable third parties to, analyze, copy, reverse engineer or otherwise attempt to determine the structure or sequence of the product.</p>

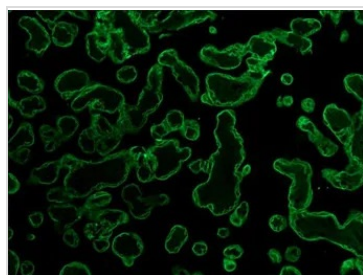
DATA IMAGES

GTx26401 WB Image

WB analysis of HeLa cell lysate using GTx26401 pan Cytokeratin antibody[PCK-26].

Lane 1 : Antibody dilution 1:300

Lane 2 : Antibody dilution 1:500

Lane 3 : Antibody dilution 1:1000.


GTx26401 IHC-P Image

IHC-P analysis of human placenta sections using GTx26401 pan Cytokeratin antibody [PCK-26] at 1:300.



For full product information, images and publications, please visit our [website](https://www.genetex.com).