

pan Cadherin antibody [CH-19]

Cat. No. GTX26528

Host	Mouse
Clonality	Monoclonal
Isotype	IgG1
Applications	WB, ICC/IF, IHC-P
Reactivity	Human, Mouse, Rat, Rabbit, Goat, Sheep, Bovine, Cat, Dog, Hamster, Chicken, Guinea pig, Pig, Frog, Psammomys, Snake

References (3)

Package

100 µl

Applications

Application Note

*Optimal dilutions/concentrations should be determined by the researcher.

Suggested dilution	Recommended dilution
WB	Assay dependent
ICC/IF	1:500
IHC-P	1:500

Not tested in other applications.

Product Note

Detection of members of the cadherin family or genetically engineered proteins containing the C-terminal cadherin tail, stains adherens type cell-cell junctions regardless of their cadherin type.

Properties

Form	Liquid
Buffer	Ascites
Preservative	15mM Sodium azide
Storage	Store as concentrated solution. Centrifuge briefly prior to opening vial. For short-term storage (1-2 weeks), store at 4°C. For long-term storage, aliquot and store at -20°C or below. Avoid multiple freeze-thaw cycles.
Immunogen	synthetic peptide corresponding to the C-terminal amino acids of chicken N-Cadherin with an extra N-terminal lysine residue (24 amino acids) coupled to KLH.
Purification	Unpurified
Conjugation	Unconjugated

Note

For laboratory research use only. Not for any clinical, therapeutic, or diagnostic use in humans or animals. Not for animal or human consumption.

Purchasers shall not, and agree not to enable third parties to, analyze, copy, reverse engineer or otherwise attempt to determine the structure or sequence of the product.

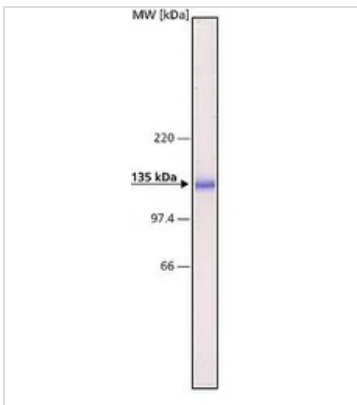


For full product information, images and publications, please visit our [website](#).

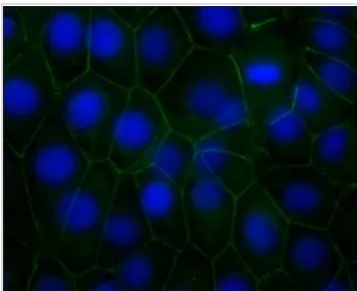
DATA IMAGES

GTX26528 IHC-P Image

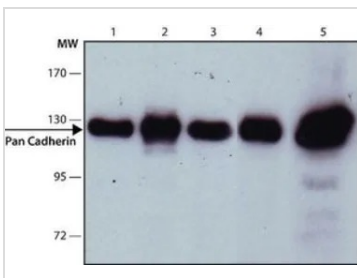
IHC-P analysis of chicken heart tissue using GTX26528 pan Cadherin antibody [CH-19] at 1:500.


GTX26528 WB Image

WB analysis of MDBK cell lysate using GTX26528 pan Cadherin antibody [CH-19] at 1:2000.


GTX26528 ICC/IF Image

ICC/IF analysis of MDBK cells using GTX26528 pan Cadherin antibody [CH-19] at 1:500(green) with DAPI(blue). Cells were fixed and permeabilized with cold methanol followed by acetone.


GTX26528 WB Image

WB analysis of (1) C2C12 (2) HeLa (3) NIH-3T3 (4) MDBK (5) COS-7 cell lysate using GTX26528 pan Cadherin antibody [CH-19] at 1:1,000.



For full product information, images and publications, please visit our [website](https://www.genetex.com).