

Rb2 / p130 antibody

Cat. No. GTX26545

Host	Rabbit
Clonality	Polyclonal
Isotype	IgG
Applications	WB, IHC-P, IP, ELISA
Reactivity	Mouse

Package

50 µl

Applications

Application Note

*Optimal dilutions/concentrations should be determined by the researcher.

Suggested dilution	Recommended dilution
WB	1:500-1:2000
IHC-P	1:200-1:1000
IP	1:100
ELISA	1:5000-1:20000

Not tested in other applications.

Calculated MW 128 kDa. ([Note](#))

Properties

Form	Liquid
Buffer	20mM Potassium Phosphate, 150mM NaCl
Preservative	0.01% Sodium azide
Storage	Store as concentrated solution. Centrifuge briefly prior to opening vial. For short-term storage (1-2 weeks), store at 4°C. For long-term storage, aliquot and store at -20°C or below. Avoid multiple freeze-thaw cycles.
Concentration	85 mg/ml (Please refer to the vial label for the specific concentration.)
Immunogen	Rb2 (p130) peptide corresponding to a region near the C-terminus of the human protein conjugated to KLH.
Conjugation	Unconjugated

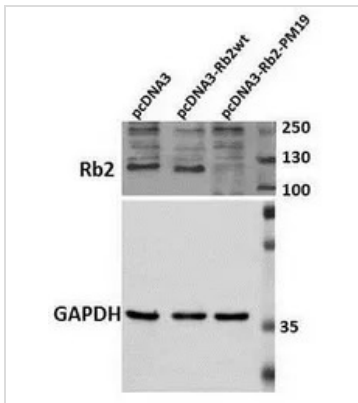
Note

For laboratory research use only. Not for any clinical, therapeutic, or diagnostic use in humans or animals. Not for animal or human consumption.

Purchasers shall not, and agree not to enable third parties to, analyze, copy, reverse engineer or otherwise attempt to determine the structure or sequence of the product.

For full product information, images and publications, please visit our [website](#).

DATA IMAGES



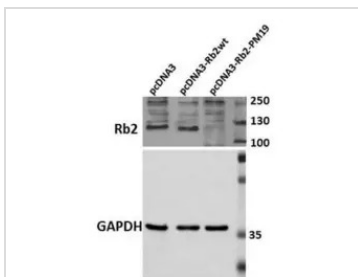
GTX26545 WB Image

Western Blot of Rabbit Anti-Rb2 p130 Antibody. Lane 1: HEK 293 pcDNA3. Lane 2: HEK 293 pcDNA3-Rb2wt. Lane 3: HEK 293 pcDNA3-Rb2-PM19. Load: 30 µg per lane. Primary antibody: Anti-Rb2 antibody at 1:250 for overnight at 4°C. Secondary antibody: IRDye800™ rabbit secondary antibody at 1:10,000 for 45 min at RT. Block: 5% BLOTTO overnight at 4°C. Predicted/Observed size: 130 kDa for p130/Rb2.



GTX26545 IHC-P Image

Immunohistochemical staining of mouse tissue using anti-pRb2/p130 antiserum. The staining shows the location of pRb2/p130 in developing mouse tissue. Other detection systems should yield similar results. Sections were cut at 5-7 µm, mounted on glass and dried overnight at 37°C. All sections were deparaffinized in xylene, rehydrated through a graded alcohol series and washed in phosphate-buffered saline (PBS). PBS was used for all subsequent washes and for antiserum dilution. Tissue sections were quenched sequentially in 0.5% hydrogen peroxide and blocked with diluted 10% normal goat anti-rabbit serum. Slides were incubated at 20° C for 1 h with rabbit anti-pRb2/p130 (1:500) dilution, washed, and then reacted with diluted goat anti-rabbit biotinylated antibody for 30 min. Slides were then reacted with streptavidin-peroxidase conjugate for 30 min at 20° C. Diaminobenzidine was used as the final chromogen. Negative controls for each tissue section were prepared by substituting the primary antiserum with pre-immune serum.



GTX26545 WB Image

WB analysis of non-transfected and transfected 293T whole cell lysate using GTX26545 Rb2 / p130 antibody.

Loading : 30 µg

Dilution : 1:250



For full product information, images and publications, please visit our [website](https://www.genetex.com).