

NFYA antibody

Cat. No. GTX26558

Host	Rabbit
Clonality	Polyclonal
Isotype	IgG
Applications	WB, ELISA, ChIP assay, EMSA
Reactivity	Human, Monkey

Package
100 µg

Applications

Application Note

*Optimal dilutions/concentrations should be determined by the researcher.

Suggested dilution	Recommended dilution
WB	1:1000
ELISA	1:10000
ChIP assay	Assay dependent
EMSA	Assay dependent

Not tested in other applications.

Calculated MW 37 kDa. ([Note](#))

Properties

Form	Liquid
Buffer	20mM Potassium Phosphate, 150mM NaCl
Preservative	0.01% Sodium azide
Storage	Store as concentrated solution. Centrifuge briefly prior to opening vial. For short-term storage (1-2 weeks), store at 4°C. For long-term storage, aliquot and store at -20°C or below. Avoid multiple freeze-thaw cycles.
Concentration	0.6 mg/ml (Please refer to the vial label for the specific concentration.)
Immunogen	Synthetic NF-Y (A subunit) peptide corresponding to a region near the N-terminus of the human protein conjugated to KLH.
Purification	IgG fraction This product was prepared from monospecific antiserum by a multi-step procedure that includes delipidation, salt fractionation and ion exchange chromatography.
Conjugation	Unconjugated



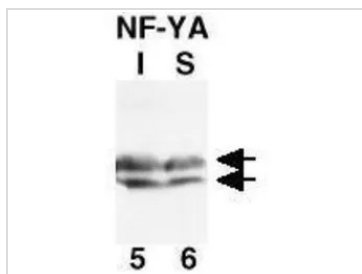
For full product information, images and publications, please visit our [website](#).

For laboratory research use only. Not for any clinical, therapeutic, or diagnostic use in humans or animals. Not for animal or human consumption.

Note

Purchasers shall not, and agree not to enable third parties to, analyze, copy, reverse engineer or otherwise attempt to determine the structure or sequence of the product.

DATA IMAGES



GTX26558 WB Image

Western Blot of Rabbit Anti-NF-Y(A subunit) Antibody. Lane 1: CHO-7 cells in the absence (I) of cholesterol. Lane 2: CHO-7 cells in the presence (S) of cholesterol. Load: Equivalent aliquots of chromatin from each sample containing ~50 µg of total protein per lane. Primary antibody: anti-NF-YA antibody at 1:1000 for overnight at 4°C. Secondary antibody: HRP conjugated Goat-anti-Rabbit IgG [H&L] secondary antibody at 1:10,000 for 45 min at RT. Predicted/Observed size: doublet of ~ 42 kDa for NF-Y A.



For full product information, images and publications, please visit our [website](https://www.genetex.com).