

Catalase antibody (HRP)

Cat. No. GTX26573

Host	Rabbit
Clonality	Polyclonal
Isotype	IgG
Applications	WB, ELISA
Reactivity	Bovine

Package
1 mg

Applications

Application Note

*Optimal dilutions/concentrations should be determined by the researcher.

Suggested dilution	Recommended dilution
WB	1:500-1:2000
ELISA	1:10000-1:50000

Not tested in other applications.

Calculated MW 60 kDa. ([Note](#))

Properties

Form	Liquid
Buffer	20mM Potassium Phosphate, 150mM NaCl, 1% BSA
Preservative	0.01% Gentamicin Sulfate
Storage	Store as concentrated solution. Centrifuge briefly prior to opening vial. For short-term storage (1-2 weeks), store at 4°C. For long-term storage, aliquot and store at -20°C or below. Avoid multiple freeze-thaw cycles.
Concentration	10 mg/ml (Please refer to the vial label for the specific concentration.)
Immunogen	Catalase collected from bovine liver
Purification	IgG fraction This product is an IgG fraction antibody purified from monospecific antiserum by a multi-step process which includes delipidation, salt fractionation and ion exchange chromatography followed by extensive dialysis against the buffer stated above.
Conjugation	Horseradish peroxidase(HRP)

Note

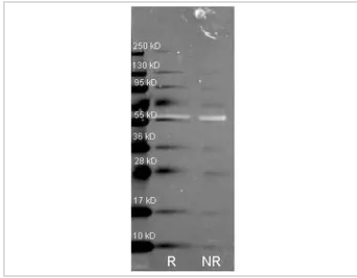
For laboratory research use only. Not for any clinical, therapeutic, or diagnostic use in humans or animals. Not for animal or human consumption.

Purchasers shall not, and agree not to enable third parties to, analyze, copy, reverse engineer or otherwise attempt to determine the structure or sequence of the product.



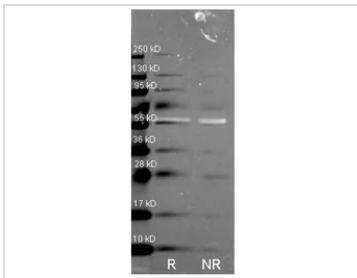
For full product information, images and publications, please visit our [website](#).

DATA IMAGES



GTx26573 WB Image

Western Blot of Rabbit anti-Catalase antibody (GTx26573). Lane R: Reduced samples of purified Catalase. Lane NR: Non-reduced samples of purified Catalase. Load: ~1ug of protein per lane. Primary antibody: Catalase antibody at 1:1000 for overnight at 4°C. Secondary antibody: Dylight488™ rabbit secondary antibody at 1:10,000 for 1.5 hrs at RT. Block overnight at 4°C. Predicted/Observed size: 59.9 kDa, 55 kDa for catalase. Other band(s): none.



GTx26573 WB Image

WB analysis of bovine catalase protein using GTx26573 Catalase antibody (HRP).

Lane R : Reduced catalase

Lane NR : Non-reduced catalase

Loading : 1 µg

Dilution : 1:1000



For full product information, images and publications, please visit our [website](https://www.genetex.com).