

## Collagen II antibody (Biotin)

**Cat. No. GTX26579**

<b>Host</b>	Rabbit
<b>Clonality</b>	Polyclonal
<b>Isotype</b>	IgG
<b>Application</b>	WB, IHC-P, IP, ELISA
<b>Reactivity</b>	Human, Bovine

**Package**  
50 µg

### APPLICATION

#### Application Note

\*Optimal dilutions/concentrations should be determined by the researcher.

Suggested dilution	Recommended dilution
WB	1:5000 - 1:10000
IHC-P	1:200 - 1:1000
IP	1:100
ELISA	1:10000 - 1:50000

Not tested in other applications.

<b>Calculated MW</b>	142 kDa. ( <a href="#">Note</a> )
<b>Product Note</b>	Typically negligible cross reactivity against other types of collagens was detected by ELISA against purified standards. Some class specific anti-collagens may be specific for three-dimensional epitopes which may result in diminished reactivity with denatured collagen or formalin-fixed, paraffin embedded tissues. This antibody reacts with most mammalian Type II collagens and has negligible cross-reactivity with Type I, III, IV, V and VI collagens. Non-specific cross reaction of anti-collagen antibodies with other human serum proteins or non-collagen extracellular matrix proteins is negligible.

### PROPERTIES

<b>Form</b>	Liquid
<b>Buffer</b>	0.02M Potassium Phosphate pH7.2, 0.15M Sodium Chloride
<b>Preservative</b>	0.01% Sodium azide
<b>Storage</b>	Store as concentrated solution. Centrifuge briefly prior to opening vial. For short-term storage (1-2 weeks), store at 4°C. For long-term storage, aliquot and store at -20°C or below. Avoid multiple freeze-thaw cycles.
<b>Concentration</b>	1 mg/ml (Please refer to the vial label for the specific concentration.)
<b>Immunogen</b>	Collagen Type II from adult human knee cartilage and bovine nasal cartilage.
<b>Purification</b>	Purified by antigen-affinity chromatography. Immunoaffinity chromatography using immobilized antigens followed by extensive cross-adsorption against other collagens, human serum proteins and non-collagen extracellular matrix proteins to remove any unwanted specificities.



For full product information, images and publications, please visit our [website](#).

## Conjugation

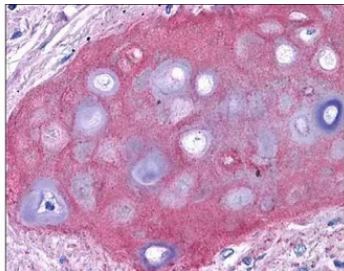
Biotin

## Note

For laboratory research use only. Not for any clinical, therapeutic, or diagnostic use in humans or animals. Not for animal or human consumption.

Purchasers shall not, and agree not to enable third parties to, analyze, copy, reverse engineer or otherwise attempt to determine the structure or sequence of the product.

## DATA IMAGES



### GTX26579 IHC-P Image

Immunohistochemistry of Rabbit Anti-Collagen II Biotin Conjugated Antibody (GTX26579). Tissue: human bronchiolar cartilage (shown). Though not shown, faint to moderate staining of tonsillar squamous epithelium, prostatic stroma, breast, colon, placenta, and dermal connective tissues was also observed. All other tissues, including brain, breast epithelium, colon epithelium, heart, intestine, kidney, liver, lung, skeletal muscle, pancreas, spleen, testis, thymus, thyroid, and uterus were negative for staining. Fixation: formalin fixed paraffin embedded. Antigen retrieval: 0.01 M sodium citrate buffer, pH 6.0 at 99-100°C - 20 minutes. Primary antibody: collagen II antibody at 10 µg/mL for 1 h at RT. Secondary antibody: Peroxidase rabbit secondary antibody at 1:10,000 for 45 min at RT. Localization: Collagen II is extracellular. Staining: Collagen II as precipitated red signal with hematoxylin purple nuclear counterstain.



For full product information, images and publications, please visit our [website](#).