

Glutamine Synthetase antibody

Cat. No. GTX26585

Host	Goat
Clonality	Polyclonal
Isotype	IgG
Applications	WB, IP, ELISA
Reactivity	Brevibacterium

Package
1 ml

Applications

Application Note

*Optimal dilutions/concentrations should be determined by the researcher.

Suggested dilution	Recommended dilution
WB	1:500-1:5000
IP	1:100
ELISA	1:5000-1:20000

Not tested in other applications.

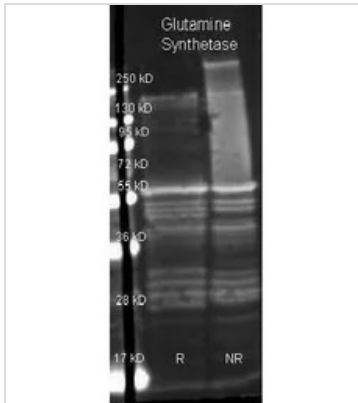
Properties

Form	Liquid
Buffer	20mM Potassium Phosphate, 150mM NaCl
Preservative	0.01% Sodium azide
Storage	Store as concentrated solution. Centrifuge briefly prior to opening vial. For short-term storage (1-2 weeks), store at 4°C. For long-term storage, aliquot and store at -20°C or below. Avoid multiple freeze-thaw cycles.
Concentration	90 mg/ml (Please refer to the vial label for the specific concentration.)
Immunogen	Glutamine Synthetase collected from brevibacterium species
Conjugation	Unconjugated
Note	<p>For laboratory research use only. Not for any clinical, therapeutic, or diagnostic use in humans or animals. Not for animal or human consumption.</p> <p>Purchasers shall not, and agree not to enable third parties to, analyze, copy, reverse engineer or otherwise attempt to determine the structure or sequence of the product.</p>



For full product information, images and publications, please visit our [website](#).

DATA IMAGES



GTx26585 WB Image

Genetex Goat anti Glutamine Synthetase antibody (GTx26585) was used to detect Glutamine Synthetase under reducing (R) and non-reducing (NR) conditions. Reduced samples of purified target proteins contained 4% BME and were boiled for 5 minutes. Samples of ~1ug of protein per lane were run by SDS-PAGE. Protein was transferred to nitrocellulose and probed with 1:3,000 dilution of primary antibody (on 4 degree C).



For full product information, images and publications, please visit our [website](https://www.genetex.com).