

CD62E + CD62P antibody [1.2B6]

Cat. No. GTX26630

Host	Mouse
Clonality	Monoclonal
Isotype	IgG1
Applications	WB, IHC-Fr, FCM, IP, ELISA
Reactivity	Human, Pig

Package
100 µg

Applications

Application Note

*Optimal dilutions/concentrations should be determined by the researcher.

Suggested dilution	Recommended dilution
WB	Assay dependent
IHC-Fr	1-10µg/ml
FCM	10µg/ml
IP	Assay dependent
ELISA	10µg/ml

Note : The epitope recognised by this antibody is reported to be sensitive to formaldehyde fixation and tissue processing. We recommends the use of acetone fixation for frozen sections.

Use 10µl of the suggested working dilution to label 10⁶ cells in 100µl.

Not tested in other applications.

Product Note This antibody reacts with porcine E-selectin (CD62E) but not with porcine P-selectin (Stocker et al. 2000)

Properties

Form	Liquid
Buffer	PBS
Preservative	0.09% Sodium azide
Storage	Store as concentrated solution. Centrifuge briefly prior to opening vial. For short-term storage (1-2 weeks), store at 4°C. For long-term storage, aliquot and store at -20°C or below. Avoid multiple freeze-thaw cycles.
Concentration	1 mg/ml (Please refer to the vial label for the specific concentration.)
Purification	Protein A purified From tissue culture supernatant
Conjugation	Unconjugated

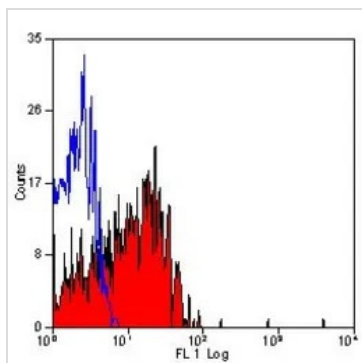


For full product information, images and publications, please visit our [website](#).

For laboratory research use only. Not for any clinical, therapeutic, or diagnostic use in humans or animals. Not for animal or human consumption.

Note

Purchasers shall not, and agree not to enable third parties to, analyze, copy, reverse engineer or otherwise attempt to determine the structure or sequence of the product.

DATA IMAGES

GTX26630 FCM Image

FACS analysis of thrombin activated human peripheral blood platelets using GTX26630 CD62E + CD62P antibody [1.2B6].



For full product information, images and publications, please visit our [website](#).