

## Biotin antibody (TxRd)

**Cat. No. GTX26653**

<b>Host</b>	Goat
<b>Clonality</b>	Polyclonal
<b>Isotype</b>	IgG
<b>Application</b>	WB, ICC/IF, Dot, ELISA
<b>Reactivity</b>	Species independent

Reference ( 1 )  
Package  
100 µg

### APPLICATION

#### Application Note

\*Optimal dilutions/concentrations should be determined by the researcher.

Suggested dilution	Recommended dilution
WB	Assay dependent
ICC/IF	1:500-1:2500
Dot	Assay dependent
ELISA	Assay dependent

Not tested in other applications.

### PROPERTIES

<b>Form</b>	Liquid
<b>Buffer</b>	20mM Potassium Phosphate, 150mM NaCl, 1% BSA
<b>Preservative</b>	0.01% Sodium azide
<b>Storage</b>	Store as concentrated solution. Centrifuge briefly prior to opening vial. For short-term storage (1-2 weeks), store at 4°C. For long-term storage, aliquot and store at -20°C or below. Avoid multiple freeze-thaw cycles. Protect from light.
<b>Concentration</b>	1 mg/ml (Please refer to the vial label for the specific concentration.)
<b>Immunogen</b>	Biotin conjugated to -KLH
<b>Purification</b>	Purified by antigen-affinity chromatography. From serum
<b>Conjugation</b>	Texas Red (TxRd) Ratio : 1.1 molecules Texas Red per Goat IgG molecule.

#### Note

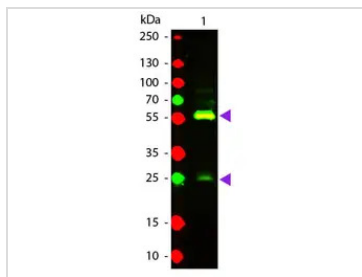
For laboratory research use only. Not for any clinical, therapeutic, or diagnostic use in humans or animals. Not for animal or human consumption.

Purchasers shall not, and agree not to enable third parties to, analyze, copy, reverse engineer or otherwise attempt to determine the structure or sequence of the product.



For full product information, images and publications, please visit our [website](#).

## DATA IMAGES



### GTX26653 WB Image

WB analysis of biotin-conjugated pig IgG using GTX26653 Biotin antibody (TxRd).

Loading : 50 ng

Dilution : 1:1000



For full product information, images and publications, please visit our [website](https://www.genetex.com).