

Fluorescein antibody (HRP)

Cat. No. GTX26656

Host	Goat
Clonality	Polyclonal
Isotype	IgG
Applications	WB, Dot, ELISA, FISH, IHC, Multiplexing
Reactivity	Species independent

References (1)

Package

100 µg

Applications

Application Note

*Optimal dilutions/concentrations should be determined by the researcher.

Suggested dilution	Recommended dilution
WB	1:5000-1:10000
Dot	Assay dependent
ELISA	1:200000
FISH	Assay dependent
IHC	1:500-1:2500
Multiplexing	Assay dependent

Not tested in other applications.

Properties

Form	Liquid
Buffer	20mM Potassium Phosphate, 150mM NaCl, 1% BSA
Preservative	0.01% Gentamicin Sulfate
Storage	Store as concentrated solution. Centrifuge briefly prior to opening vial. For short-term storage (1-2 weeks), store at 4°C. For long-term storage, aliquot and store at -20°C or below. Avoid multiple freeze-thaw cycles.
Concentration	1 mg/ml (Please refer to the vial label for the specific concentration.)
Immunogen	Fluorescein conjugated to Goat IgG
Purification	Purified by antigen-affinity chromatography. From serum
Conjugation	Horseradish peroxidase(HRP)



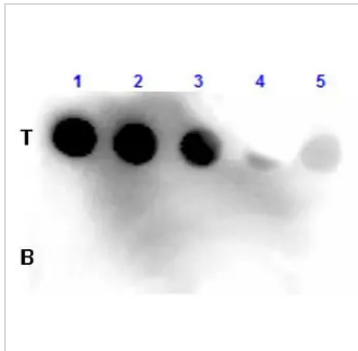
For full product information, images and publications, please visit our [website](#).

For laboratory research use only. Not for any clinical, therapeutic, or diagnostic use in humans or animals. Not for animal or human consumption.

Note

Purchasers shall not, and agree not to enable third parties to, analyze, copy, reverse engineer or otherwise attempt to determine the structure or sequence of the product.

DATA IMAGES



GTX26656 Dot Image

Dot blot analysis of BSA-conjugated Fluorescein (T) and BSA (B) using GTX26656 Fluorescein antibody (HRP).

Lane 1 : 100 ng

Lane 2 : 33.3 ng

Lane 3 : 11.1 ng

Lane 4 : 3.7 ng

Lane 5 : 1.23 ng

Dilution : 1 µg/mL



For full product information, images and publications, please visit our [website](#).