

GFP antibody (Biotin)

Cat. No. GTX26658

Host	Goat
Clonality	Polyclonal
Isotype	IgG
Applications	WB, ICC/IF, IHC-P, FCM, IP, ELISA, Multiplexing
Reactivity	Species independent

References (14)

Package

100 µg

Applications

Application Note

*Optimal dilutions/concentrations should be determined by the researcher.

Suggested dilution	Recommended dilution
WB	1:2000-1:10000
ICC/IF	Assay dependent
IHC-P	1:1000-1:5000
FCM	Assay dependent
IP	Assay dependent
ELISA	1:50000-1:80000
Multiplexing	Assay dependent

Not tested in other applications.

Product Note No reaction was observed against Human, Mouse and Rat Serum Proteins.

Properties

Form	Liquid
Buffer	20mM Potassium Phosphate, 150mM NaCl, 1% BSA
Preservative	0.01% Sodium azide
Storage	Store as concentrated solution. Centrifuge briefly prior to opening vial. For short-term storage (1-2 weeks), store at 4°C. For long-term storage, aliquot and store at -20°C or below. Avoid multiple freeze-thaw cycles.
Concentration	1 mg/ml (Please refer to the vial label for the specific concentration.)
Immunogen	Recombinant Green Fluorescent Protein (GFP) fusion protein corresponding to the full length amino acid sequence (246aa) derived from the jellyfish <i>Aequorea victoria</i> .
Purification	Purified by antigen-affinity chromatography. From serum



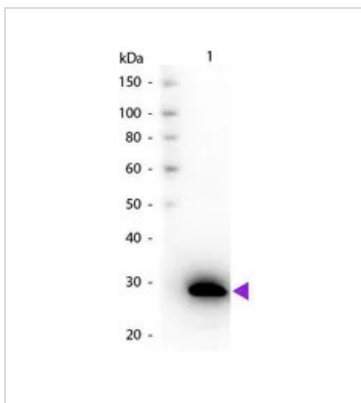
For full product information, images and publications, please visit our [website](#).

Conjugation Biotin

For laboratory research use only. Not for any clinical, therapeutic, or diagnostic use in humans or animals. Not for animal or human consumption.

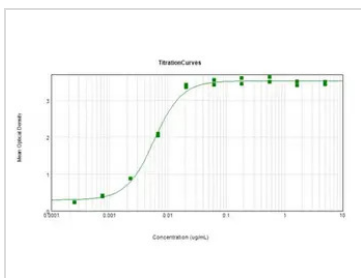
Note Purchasers shall not, and agree not to enable third parties to, analyze, copy, reverse engineer or otherwise attempt to determine the structure or sequence of the product.

DATA IMAGES



GTX26658 WB Image

Western blot of Biotin Goat Anti-GFP antibody. Lane 1: GFP. Load: 50 ng per lane. Primary antibody: GFP antibody Biotin conjugated at 1:1,000 for 60 min at RT. Secondary antibody: Peroxidase streptavidin secondary antibody at 1:40,000 for 30 min at RT. Blocking for 30 min at RT. Predicted/Observed size: 28 kDa, 28 kDa for GFP. Other band(s): None.



GTX26658 ELISA Image

ELISA analysis of GFP using serially diluted GTX26658 GFP antibody (Biotin).
Coating : 10 µg/mL



For full product information, images and publications, please visit our [website](#).