

GFP antibody (AP)

Cat. No. GTX26661

Host	Goat
Clonality	Polyclonal
Isotype	IgG
Application	WB, ICC/IF, IHC-Fr, Dot, ELISA, IHC
Reactivity	Species independent

Reference (1)
Package
100 µg

APPLICATION

Application Note

*Optimal dilutions/concentrations should be determined by the researcher.

Suggested dilution	Recommended dilution
WB	1:500-1:2500
ICC/IF	1:200-1:1000
IHC-Fr	Assay dependent
Dot	Assay dependent
ELISA	1:2000-1:8000
IHC	1:200-1:1000

Not tested in other applications.

Product Note No reaction was observed against Human, Mouse and Rat Serum Proteins.

PROPERTIES

Form	Liquid
Buffer	50mM Tris-HCl, 150mM NaCl, 1mM MgCl ₂ , 0.1mM ZnCl ₂ , 1% BSA, 50% Glycerol
Preservative	0.1% Sodium azide
Storage	Store as concentrated solution. Centrifuge briefly prior to opening vial. Store at 4°C. DO NOT FREEZE.
Concentration	1 mg/ml (Please refer to the vial label for the specific concentration.)
Immunogen	Recombinant Green Fluorescent Protein (GFP) fusion protein corresponding to the full length amino acid sequence (246aa) derived from the jellyfish <i>Aequorea victoria</i> .
Purification	Purified by antigen-affinity chromatography. From serum
Conjugation	Alkaline Phosphatase (AP)

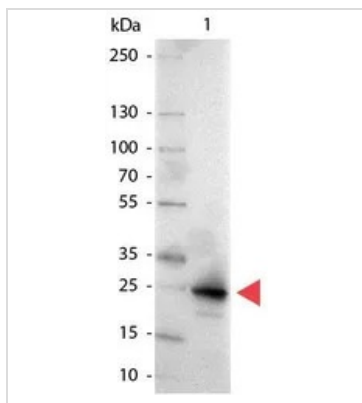


For full product information, images and publications, please visit our [website](#).

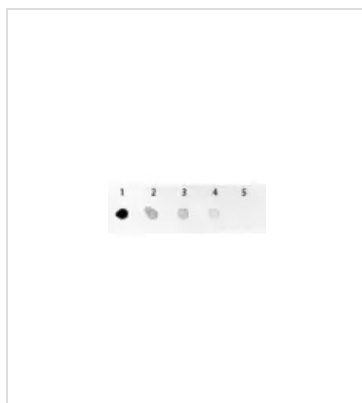
For laboratory research use only. Not for any clinical, therapeutic, or diagnostic use in humans or animals. Not for animal or human consumption.

Note

Purchasers shall not, and agree not to enable third parties to, analyze, copy, reverse engineer or otherwise attempt to determine the structure or sequence of the product.

DATA IMAGES

GTx26661 WB Image

Western Blot of Alkaline Phosphatase conjugated Goat anti-GFP antibody (GTx26661). Lane 1: GFP. Load: 50 ng per lane. Primary antibody: none. Secondary antibody: Alkaline Phosphatase GFP secondary antibody at 1:1000 for 60 min at RT. Block for 30 min RT. Predicted/Observed size: 28 kDa for GFP. Other band(s): none


GTx26661 Dot Image

Dot blot analysis of GFP using GTx26661 GFP antibody (AP).

Lane 1 : 100 ng

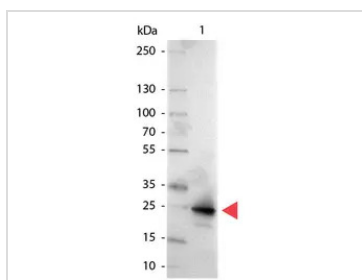
Lane 2 : 33.33 ng

Lane 3 : 11.11 ng

Lane 4 : 3.7 ng

Lane 5 : 1.23 ng

Dilution : 1:1000


GTx26661 WB Image

WB analysis of recombinant GFP protein using GTx26661 GFP antibody (AP).

Loading : 50 ng

Dilution : 1:1000



For full product information, images and publications, please visit our [website](https://www.genetex.com).