

## GFP antibody (HRP)

**Cat. No. GTX26663**

<b>Host</b>	Goat
<b>Clonality</b>	Polyclonal
<b>Isotype</b>	IgG
<b>Applications</b>	WB, ICC/IF, IP, ELISA, IHC, Multiplexing
<b>Reactivity</b>	Species independent

References ( 1 )

Package

100 µg

## Applications

**Application Note**

\*Optimal dilutions/concentrations should be determined by the researcher.

Suggested dilution	Recommended dilution
WB	1:2000-1:5000
ICC/IF	Assay dependent
IP	Assay dependent
ELISA	1:10000-1:50000
IHC	1:500-1:2000
Multiplexing	Assay dependent

Not tested in other applications.

**Product Note** No reaction was observed against Human, Mouse and Rat Serum Proteins.

## Properties

<b>Form</b>	Liquid
<b>Buffer</b>	20mM Potassium Phosphate, 150mM NaCl, 1% BSA
<b>Preservative</b>	0.01% Gentamicin Sulfate
<b>Storage</b>	Store as concentrated solution. Centrifuge briefly prior to opening vial. For short-term storage (1-2 weeks), store at 4°C. For long-term storage, aliquot and store at -20°C or below. Avoid multiple freeze-thaw cycles.
<b>Concentration</b>	1 mg/ml (Please refer to the vial label for the specific concentration.)
<b>Immunogen</b>	Recombinant Green Fluorescent Protein (GFP) fusion protein corresponding to the full length amino acid sequence (246aa) derived from the jellyfish <i>Aequorea victoria</i> .
<b>Purification</b>	Purified by antigen-affinity chromatography. From serum
<b>Conjugation</b>	Horseradish peroxidase(HRP)

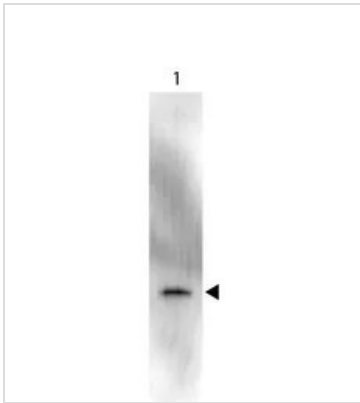


For full product information, images and publications, please visit our [website](#).

For laboratory research use only. Not for any clinical, therapeutic, or diagnostic use in humans or animals. Not for animal or human consumption.

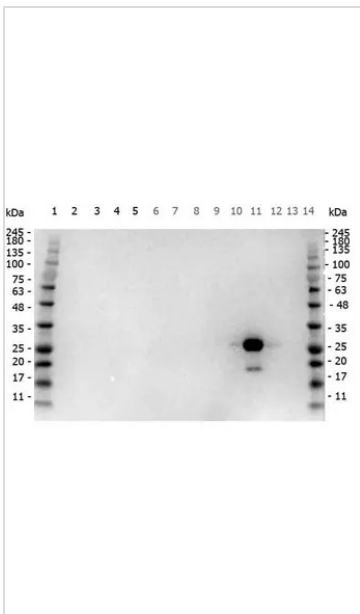
**Note**  
 Purchasers shall not, and agree not to enable third parties to, analyze, copy, reverse engineer or otherwise attempt to determine the structure or sequence of the product.

DATA IMAGES



**GTX26663 WB Image**

Western Blot of Anti-GFP Antibody Peroxidase Conjugate (GTX26663). Lane 1: 50ng of GFP. Primary antibody: none. Secondary antibody: Anti-GFP Antibody Peroxidase Conjugate secondary antibody was used at 1:1000 for 45 min at RT. Block: 1% BSA-TTBS 30 min at 20°C. Predicted/Observed size: 28 kDa for GFP. Other band(s): none.



**GTX26663 WB Image**

WB analysis of various samples using GTX26663 GFP antibody (HRP).  
 Lane 1 and 14 : Protein ladder  
 Lane 2 : 293T whole cell lysate  
 Lane 3 : HeLa whole cell lysate  
 Lane 4 : CHO-K1 whole cell lysate  
 Lane 5 : C2C12 whole cell lysate  
 Lane 6 : NIH-3T3 whole cell lysate  
 Lane 7 : Mouse embryonic fibroblast lysate  
 Lane 8 : HCP  
 Lane 9 : MBP  
 Lane 10 : RFP  
 Lane 11 : GFP  
 Lane 12 : GST  
 Lane 13 : MBP  
 Dilution : 1:1000



For full product information, images and publications, please visit our [website](#).