

## Fibrinogen antibody

Cat. No. GTX26666

<b>Host</b>	Goat
<b>Clonality</b>	Polyclonal
<b>Isotype</b>	IgG
<b>Applications</b>	WB, ICC/IF, IHC-P, ELISA
<b>Reactivity</b>	Human

References ( 3 )

Package

100 µl

## Applications

## Application Note

\*Optimal dilutions/concentrations should be determined by the researcher.

Suggested dilution	Recommended dilution
WB	1:2000-1:10000
ICC/IF	Assay dependent
IHC-P	1:500
ELISA	1:20000-1:100000

Not tested in other applications.

Calculated MW 95 kDa. ( [Note](#) )

## Properties

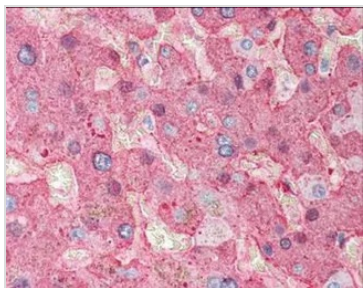
<b>Form</b>	Liquid
<b>Buffer</b>	20mM Potassium Phosphate, 150mM NaCl
<b>Preservative</b>	0.01% Sodium azide
<b>Storage</b>	Store as concentrated solution. Centrifuge briefly prior to opening vial. For short-term storage (1-2 weeks), store at 4°C. For long-term storage, aliquot and store at -20°C or below. Avoid multiple freeze-thaw cycles.
<b>Concentration</b>	90 mg/ml (Please refer to the vial label for the specific concentration.)
<b>Immunogen</b>	Fibrinogen collected from human plasma
<b>Conjugation</b>	Unconjugated

## Note

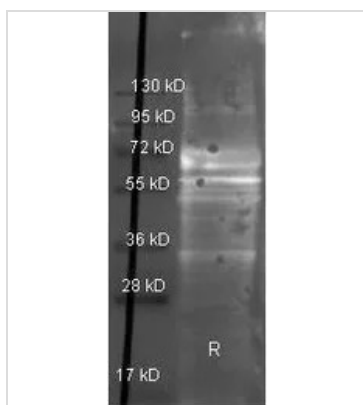
For laboratory research use only. Not for any clinical, therapeutic, or diagnostic use in humans or animals. Not for animal or human consumption.

Purchasers shall not, and agree not to enable third parties to, analyze, copy, reverse engineer or otherwise attempt to determine the structure or sequence of the product.

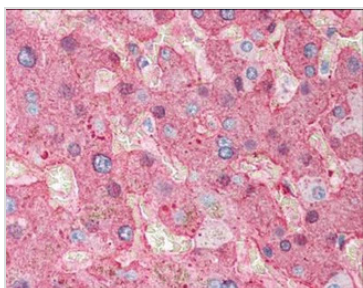
For full product information, images and publications, please visit our [website](#).

**DATA IMAGES**

**GTx26666 IHC-P Image**

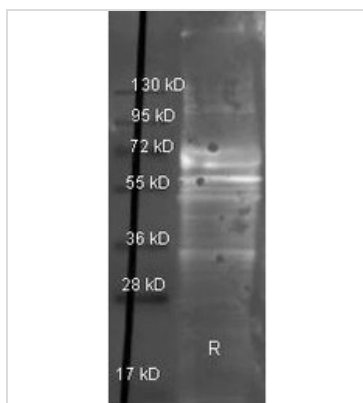
IHC-P of Goat Anti-Fibrinogen antibody (GTx26666). Tissue: human liver tissue. Fixation: formalin fixed paraffin embedded. Antigen retrieval: not required. Primary antibody: Fibrinogen antibody at 1:500 for 1 h at RT. Secondary antibody: Peroxidase goat secondary antibody at 1:10,000 for 45 min at RT. Localization: Fibrinogen is localized in plasma. Staining: Fibrinogen as precipitated red signal with hematoxylin purple nuclear counterstain.


**GTx26666 WB Image**

Western Blot of Goat anti-Fibrinogen antibody (GTx26666). Lane 1: Fibrinogen under reducing conditions. Load: 1 µg per lane. Primary antibody: Fibrinogen antibody at 1:3,000 for overnight at 4°C.


**GTx26666 IHC-P Image**

IHC-P analysis of human liver tissue using GTx26666 Fibrinogen antibody.  
Dilution : 1:500


**GTx26666 WB Image**

WB analysis of reduced human fibrinogen using GTx26666 Fibrinogen antibody.  
Loading : 1 µg  
Dilution : 1:3000



For full product information, images and publications, please visit our [website](https://www.genetex.com).