

## TNF alpha antibody

**Cat. No. GTX26671**

<b>Host</b>	Rabbit
<b>Clonality</b>	Polyclonal
<b>Isotype</b>	IgG
<b>Applications</b>	WB, ICC/IF, IHC-P, ELISA
<b>Reactivity</b>	Human

References ( 1 )

Package

200 µg

## Applications

**Application Note**

\*Optimal dilutions/concentrations should be determined by the researcher.

Suggested dilution	Recommended dilution
WB	1:500-1:2000
ICC/IF	Assay dependent
IHC-P	1:100-1:500
ELISA	1:1000-1:5000

Not tested in other applications.

<b>Calculated MW</b>	26 kDa. ( <a href="#">Note</a> )
<b>Product Note</b>	The antibody does not recognize human TNFβ (lymphotoxin).

## Properties

<b>Form</b>	Liquid
<b>Buffer</b>	20mM Potassium Phosphate, 150mM NaCl
<b>Preservative</b>	No preservatives
<b>Storage</b>	Store as concentrated solution. Centrifuge briefly prior to opening vial. For short-term storage (1-2 weeks), store at 4°C. For long-term storage, aliquot and store at -20°C or below. Avoid multiple freeze-thaw cycles.
<b>Concentration</b>	1 mg/ml (Please refer to the vial label for the specific concentration.)
<b>Immunogen</b>	Recombinant human TNF alpha
<b>Purification</b>	IgG fraction
<b>Conjugation</b>	Unconjugated



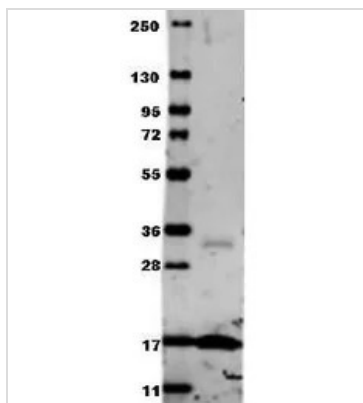
For full product information, images and publications, please visit our [website](#).

For laboratory research use only. Not for any clinical, therapeutic, or diagnostic use in humans or animals. Not for animal or human consumption.

**Note**

Purchasers shall not, and agree not to enable third parties to, analyze, copy, reverse engineer or otherwise attempt to determine the structure or sequence of the product.

DATA IMAGES



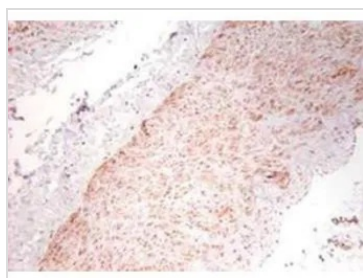
**GTX26671 WB Image**

GTX26671 was used at a 1:1000 dilution incubated o/n 4°C to detect recombinant human TNF-Alpha protein by Western blot.



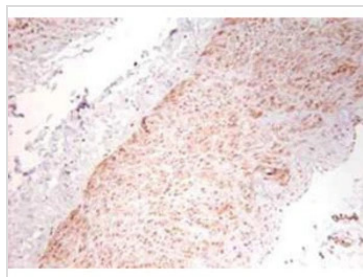
**GTX26671 IHC-P Image**

Fluorescent IHC-P staining of human colon using anti-TNF alpha antibody (GTX26671) at a primary antibody dilution of 1:100.



**GTX26671 IHC-P Image**

Immunohistochemistry using GTX26671 showing staining of formalin/PFA-fixed paraffin-embedded sections of human artery tissue sections. Sections were fixed in formaldehyde and subjected to heat mediated antigen retrieval in citrate buffer (pH 6.0). Slides were blocked for ten minutes with 1.5% serum. Primary antibody was diluted 1:100 and incubated with samples for 24 hours at 4°C. HRP-conjugated goat anti-rabbit antibody was used as the secondary antibody.



**GTX26671 IHC-P Image**

IHC-P analysis of human artery tissue using GTX26671 TNF alpha antibody.  
Antigen retrieval : Heat mediated citrate buffer (pH 6.0)  
Dilution : 1:100



For full product information, images and publications, please visit our [website](#).