

TNF alpha antibody

Cat. No. GTX26671

Host	Rabbit
Clonality	Polyclonal
Isotype	IgG
Applications	WB, ICC/IF, IHC-P, ELISA
Reactivity	Human

References (1)

Package

200 µg

Applications

Application Note

*Optimal dilutions/concentrations should be determined by the researcher.

Suggested dilution	Recommended dilution
WB	1:500-1:2000
ICC/IF	Assay dependent
IHC-P	1:100-1:500
ELISA	1:1000-1:5000

Not tested in other applications.

Calculated MW 26 kDa. ([Note](#))

Product Note The antibody does not recognize human TNFβ (lymphotoxin).

Properties

Form	Liquid
Buffer	20mM Potassium Phosphate, 150mM NaCl
Preservative	No preservative
Storage	Store as concentrated solution. Centrifuge briefly prior to opening vial. For short-term storage (1-2 weeks), store at 4°C. For long-term storage, aliquot and store at -20°C or below. Avoid multiple freeze-thaw cycles.
Concentration	1 mg/ml (Please refer to the vial label for the specific concentration.)
Immunogen	Recombinant human TNF alpha
Purification	IgG fraction
Conjugation	Unconjugated

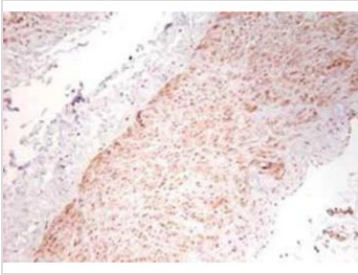


For full product information, images and publications, please visit our [website](#).

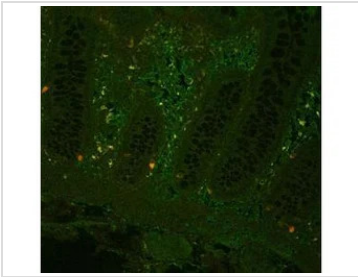
For laboratory research use only. Not for any clinical, therapeutic, or diagnostic use in humans or animals. Not for animal or human consumption.

Note

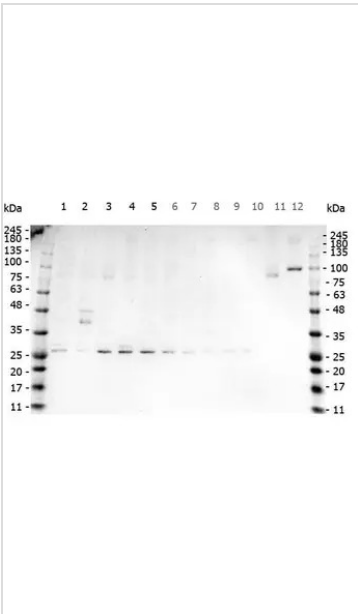
Purchasers shall not, and agree not to enable third parties to, analyze, copy, reverse engineer or otherwise attempt to determine the structure or sequence of the product.

DATA IMAGES

GTX26671 IHC-P Image

IHC-P analysis of human artery tissue using GTX26671 TNF alpha antibody.
Antigen retrieval : Heat mediated citrate buffer (pH 6.0)
Dilution : 1:100


GTX26671 IHC-P Image

IHC-P analysis of human colon tissue using GTX26671 TNF alpha antibody.
Dilution : 1:100


GTX26671 WB Image

WB analysis of various samples using GTX26671 TNF alpha antibody.

Lane 1 : 293T whole cell lysate
Lane 2 : HeLa whole cell lysate
Lane 3 : MCF-7 whole cell lysate
Lane 4 : Jurkat whole cell lysate
Lane 5 : A431 whole cell lysate
Lane 6 : A549 whole cell lysate
Lane 7 : LNCap whole cell lysate
Lane 8 : Molt-4 whole cell lysate
Lane 9 : Ramos whole cell lysate
Lane 10 : Raji whole cell lysate
Lane 11 : A-172 whole cell lysate
Lane 12 : NIH-3T3 whole cell lysate

Loading : 35 µg
Dilution : 1 µg/mL



For full product information, images and publications, please visit our [website](http://www.genetex.com).