

# IL6 antibody

**Cat. No. GTX26672**

<b>Host</b>	Rabbit
<b>Clonality</b>	Polyclonal
<b>Isotype</b>	IgG
<b>Applications</b>	WB, IHC-P, IHC-Fr, Dot, ELISA, Neutralizing/Inhibition
<b>Reactivity</b>	Human

References ( 2 )

Package

200 µl

## Applications

### Application Note

\*Optimal dilutions/concentrations should be determined by the researcher.

Suggested dilution	Recommended dilution
WB	1:1000
IHC-P	1:1:100-1:200
IHC-Fr	Assay dependent
Dot	Assay dependent
ELISA	1:500-1:2000
Neutralizing/Inhibition	1:100

Not tested in other applications.

**Calculated MW** 24 kDa. ( [Note](#) )

## Properties

<b>Form</b>	Liquid
<b>Buffer</b>	20mM Potassium Phosphate, 150mM NaCl
<b>Preservative</b>	No preservatives
<b>Storage</b>	Store as concentrated solution. Centrifuge briefly prior to opening vial. For short-term storage (1-2 weeks), store at 4°C. For long-term storage, aliquot and store at -20°C or below. Avoid multiple freeze-thaw cycles.
<b>Concentration</b>	80 mg/ml (Please refer to the vial label for the specific concentration.)
<b>Immunogen</b>	Recombinant human IL-6 produced in E.coli.
<b>Conjugation</b>	Unconjugated

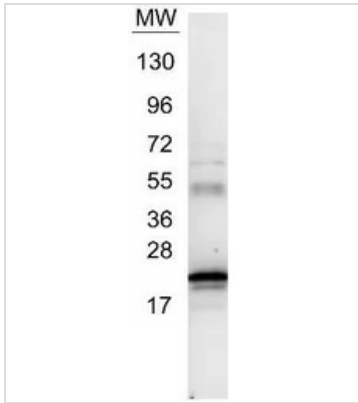


For full product information, images and publications, please visit our [website](#).

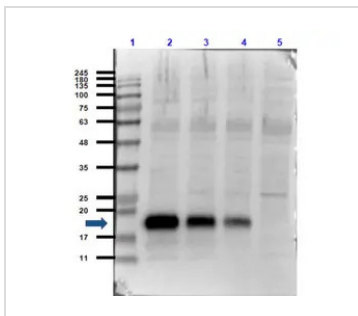
For laboratory research use only. Not for any clinical, therapeutic, or diagnostic use in humans or animals. Not for animal or human consumption.

**Note**

Purchasers shall not, and agree not to enable third parties to, analyze, copy, reverse engineer or otherwise attempt to determine the structure or sequence of the product.

**DATA IMAGES**

**GTX26672 WB Image**

Western blot using GeneTex anti-IL6 antibody (GTX26672). ~1 µg of our control protein recombinant human IL-6 was resolved on a 4-20% Tris-Glycine gel by SDS-PAGE and transferred onto nitrocellulose. The blot shows detection of a band ~21 kDa in size corresponding to anti-IL6 antibody. Molecular weight markers are also shown (MW). After transfer, the membrane was blocked for 30 minutes with 1% BSA-TBST. Detection occurred using peroxidase conjugated anti-Rabbit IgG (GTX27090) secondary antibody diluted 1:40,000 in blocking buffer for 30 min at RT followed by reaction with chemiluminescent substrate.


**GTX26672 WB Image**

WB analysis of recombinant human IL-6 protein using GTX26672 IL6 antibody.

Lane 1 : Protein ladder

Lane 2 : 50 ng

Lane 3 : 20 ng

Lane 4 : 10 ng

Lane 5 : Mock

Dilution : 1:1000



For full product information, images and publications, please visit our [website](https://www.genetex.com).